

**TECHNICAL MANUAL**

**ORGANIZATIONAL MAINTENANCE REPAIR PARTS  
AND SPECIAL TOOLS LISTS**

**AIR CONDITIONER: COMPACT VERTICAL,  
208V, 3 PHASE, 60,000 BTUH COOLING;  
49,000 BTUH HEATING (TRANE MODELS)  
50/60 HERTZ MODEL MAC6V60-360-2  
FSN 4120-935-5416  
400 HERTZ MODEL MAC4V60-360-3  
FSN 4120-935-5417**

---

**HEADQUARTERS, DEPARTMENT OF THE ARMY  
NOVEMBER 1970**

**ORGANIZATIONAL MAINTENANCE REPAIR PARTS AND SPECIAL TOOLS LISTS**  
**AIR CONDITIONER: COMPACT VERTICAL, 208V, 3 PHASE,**  
**60,000 BTUH COOLING; 49,000 BTUH HEATING (TRANE MODELS)**  
**50/60 HERTZ MODEL MAC6V60-360-2 FSN 4120-935-5416**  
**400 HERTZ MODEL MAC4V60-360-3 FSN 4120-935-5417**

Current as of 29 October 1970

		Listing Page	Illustration Figure
SECTION	I.	INTRODUCTION .....	iii
	II.	PRESCRIBED LOAD ALLOWANCE .....	1
	III.	REPAIR PARTS .....	2
Group	01.	Panels and Casing Assembly .....	2
		Panels and insulation .....	1
		Casing and insulation .....	2
		Covers, filters, tarpaulins and plugs .....	3
		Grilles and gaskets .....	4
Group	02.	Evaporator and Condenser Fan and Motor Assembly .....	7
		Evaporator fan and motor .....	5
		Condenser fan motor .....	6
		Condenser fan and supports .....	7
Group	03.	Control Panel and Junction Box .....	9
		Control panel .....	8
		Junction box .....	9
		Junction box contractors and terminal boards .....	10
Group	04.	Compressor, Receiver and Valves .....	13
		Compressor terminal box.....	15
Group	06.	Dehydrator, Motor Mounting and Sight Glass .....	13
		Dehydrator, tubing, valves and sight glass .....	17
Group	07.	Evaporator, Mist Eliminator, Heater and Damper .....	15
		Damper and linkage.....	19
		Evaporator, mist eliminator and heater .....	20
SECTION	IV.	SPECIAL TOOLS, TEST AND SUPPORT EQUIPMENT (NOT APPLICABLE) .....	20
	V.	FEDERAL STOCK NUMBER AND REFERENCE NUMBER INDEX.....	30

## Section I. INTRODUCTION

### 1. Scope

This manual lists repair parts, special tools, test and support equipment required for the performance of organizational maintenance of the air conditioner.

### 2. General

This Repair Parts and Special Tools List is divided into the following sections:

*a. Prescribed Load Allowance (PLA)-Section II.* A composite listing of the repair parts, special tools, test and support equipment having quantitative allowances for initial stockage at the organizational level.

*b. Repair Parts-Section III.* A list of repair parts authorized for the performance of maintenance at the organizational level in figure and item number sequence.

*c. Special Tools, Test and Support Equipment Section IV.* (Not Applicable.)

*d. Federal Stock Number and Reference Number Index-Section V.* A list of Federal Stock Numbers in ascending numerical sequence followed by a list of reference numbers in ascending alpha-numeric sequence, cross-referenced to the illustration figure number and item number.

#### NOTE

**Items not illustrated are cross-referenced to group number.**

### 3. Explanation of Columns

The following provides an explanation of columns in the tabular lists in sections II, III, and IV:

*a. Source, Maintenance, and Recoverability Codes (SMR).*

(1) Source code indicates the selection status and source for the listed item. Source codes are:

Code	Explanation
P	Repair Parts, Special Tools and Test Equipment supplied from the GSA/DSA, or Army supply system, and authorized for use at indicated maintenance categories.
P2	Repair Parts, Special Tools and Test Equipment which are procured and stocked for insurance purposes because the combat or military essentiality of the end item dictated that a minimum quantity be available in the supply system.
M	Repair Parts, Special Tools and Test Equipment which are not procured or stocked, as such, in the supply system but

Code	Explanation
	are to be manufactured at indicated maintenance levels.
A	Assemblies which are not procured or stocked as such, but are made up of two or more units. Such component units carry individual stock numbers and descriptions, are procured and stocked separately and can be assembled to form the required assembly at indicated maintenance categories.
X	Parts and assemblies that are not procured or stocked because the failure rate is normally below that of the applicable end item or component. Tile failure of such part or assembly should result in retirement of the end item from the supply system.
X1	Repair parts which are not procured or stocked. The requirement for such items will be filled by the next higher assembly or component.
X2	Repair Parts, Special Tools and Test Equipment which are not stocked and have no foreseen mortality. The indicated maintenance category requiring such repair parts will attempt to obtain the parts through cannibalization or salvage, the item may be requisitioned with exception data, from the end item manager, for immediate use.
G	Major assemblies that are procured with PEMA funds for initial issue only as exchange assemblies at DSU and GSU level. These assemblies will not be stocked above the DS and GS level or returned to depot supply level.

(2) Maintenance code indicates the lowest category of maintenance authorized to install the listed item. The maintenance level code is:

Code	Explanation
O	Organizational maintenance

(3) Recoverability code indicates whether unserviceable items should be returned for recovery or salvage. Items not coded are expendable. Recoverability codes are:

Code	Explanation
R	Applied to repair parts, (assemblies and components) special tools and test equipment which are considered economically reparable at direct and general support maintenance levels. When the item is no longer economically reparable, it is normally disposed of at the GS level. When supply considerations dictate, some of these repair parts may be listed for automatic return to supply for depot level repair as set forth in

Code	Explanation
	AR 710-50. When so listed, they will be replaced by supply on an exchange basis.
S	Repair Parts, Special Tools, Test Equipment and assemblies which are economically repairable at DSU and GSU activities and which normally are furnished by supply on an exchange basis. When items are determined by a GSU to be uneconomically repairable, they will be evacuated to a depot for evaluation and analysis before final disposition.
T	Higher dollar value recoverable repair parts, special tools and test equipment which are subject to special handling and are issued on an exchange basis. Such items will be repaired or overhauled at depot maintenance activities only. No repair may be accomplished at lower levels.
U	Repair Parts, Special Tools and Test Equipment specifically selected for salvage by reclamation units because of precious metal content, critical materials, high dollar value or reusable casings or castings.

b. *Federal Stock Number.* This column indicates the Federal stock number assigned to the item and will be used for requisitioning purposes.

c. *Description.* This column indicates the Federal item name and any additional description of the item required. Assembly components and subassemblies are indented under major assemblies. The abbreviation "w/e", when used as part of the nomenclature, indicates the Federal stock number includes all armament, equipment, accessories, and repair parts issued with the item. A part number or other reference number is followed by the applicable five-digit Federal supply code for manufacturers in parenthesis. Repair parts quantities included in kits and sets are shown in front of the repair part name. Material required for manufacture or fabrication is identified.

d. *Unit of Measure (U/M).* A two-character alphabetic abbreviation indicating the amount or quantity of the item upon which the allowances are based, e.g., ft, ea, pr, etc.

e. *Quantity Incorporated in Unit.* This column indicates the quantity of the item used in the assembly group. A "V" appearing in this column in lieu of a quantity indicates that a definite quantity cannot be indicated (e.g., shims, spacers, etc.).

f. *Fifteen-Day Organizational Maintenance Allowance.*

(1) The allowance columns are divided into four subcolumns. Indicated in each subcolumn opposite

the first appearance of each item is the total quantity of items authorized for the number of equipments supported. Subsequent appearances of the same item will have the letters "REF" in the allowance column. To locate the referenced item, locate the FSN or reference number in the index. The earliest figure and item number is the referenced item. Items authorized for use as required but not for initial stockage are identified with an asterisk in the allowance column.

(2) The quantitative allowance for organizational level of maintenance represents one initial prescribed load for a 15-day period for the number of equipments supported. Units authorized additional prescribed loads, multiply the number of prescribed loads by the quantity in the appropriate density column to determine the number of repair parts authorized.

(3) To determine allowances when supporting more than 100 of these equipments: First, divide the number of equipments supported by 100 by moving the decimal two spaces left; second, multiply the result by the quantity in the 51-100 density column. Example, authorized allowance for 51-100 equipment is 40; for 150 equipments, multiply 40 by 1.50 or 60 parts authorized.

(4) Subsequent changes to allowances will be limited as follows: No change in the range of items is authorized. If additional items are considered necessary, recommendations should be forwarded to U.S. Army Mobility Equipment Command for exception or revision to the allowance list. Revisions to the range of items authorized will be made by the U.S. Army Mobility Equipment Command based upon engineering experience, demand data, or TAERS information.

g. *Illustration.* This column is divided as follows:

(1) Figure number. Indicates the figure number of the illustration in which the item is shown.

(2) Item number. Indicates the callout number used to reference the item in the illustration.

#### 4. Special Information

a. Identifications of the usable on codes included in the description columns of this publication are: (Applicable only when identifying parts to particular serial number range or model).

Code	Used on
A.....	MAC6V60-360-2
B.....	MAC4V60-360-3

Items with no usable on code listed in the description column are applicable to all models.

b. Repair parts mortality has been based on 7200 hours of operation per year.

c. Parts which require manufacture or assembly at a category higher than that authorized for installation will indicate in the source column the higher category.

d. The following publication pertains to the Air Conditioner and its components.

TM 5-4120-207-15 Operator, Organizational, DS, GS, and Depot Maintenance Manual

e. The illustrations in this manual are identical to the applicable illustrations published in the -35P, Direct and General Support and Depot Maintenance Repair Parts and Special Tools List manual, and the figure numbers are the same as appear in that manual. The -35P illustrations are given for a better understanding of the parts relationship, however, only those parts assigned maintenance code "0" are listed in the tabular portion and only these parts are authorized for requisitioning from this manual.

### 5. How to Locate Repair Parts

a. When Federal Stock Number or Reference Number is Unknown:

(1) *First.* Using the table of contents, determine the assembly group within which the repair part belongs. This is necessary since illustrations are prepared for assembly groups and listings are divided into the same groups.

(2) *Second.* Find the illustration covering the assembly group to which the repair part belongs.

(3) *Third.* Identify the repair part on the illustration and note the illustration figure and item number of the repair part.

(4) *Fourth.* Using the Repair Part Listing, find the assembly to which the repair part belongs and locate the illustration figure and item number noted on the illustration.

b. When the Federal Stock Number or Reference Number is Known:

(1) *First.* Using the Index of Federal Stock Numbers and Reference Numbers find the pertinent Federal stock number or reference number. This index is in ascending FSN sequence followed by a list of reference numbers in alpha-numeric sequence, cross referenced to the illustration figure number and item number.

(2) *Second.* Using the Repair Part Listing, find the assembly group of the repair part and the illustration figure number and item number referenced in the Index of Federal Stock Numbers and Reference Numbers.

c. When the Federal Stock Number or Reference Number is known and the Repair Part is not Illustrated.

(1) *First.* Using the Index of Federal Stock Numbers and Reference Numbers find the pertinent Federal stock number or reference number in the section titled "Items Not Illustrated" and note the group number. This section of the index is in ascending

FSN sequence followed by a list of reference numbers in alpha-numeric sequence, cross-referenced to assembly group number.

(2) *Second.* Using the Table of Contents, locate the assembly group number and page number.

(3) *Third.* Using the applicable group number and page number locate the pertinent stock number or reference number in the Repair Parts Listing. Items which are not illustrated are listed at the end of the assembly group to which they belong.

### 6. Abbreviations

- a.c..... alternating current
- d.c..... direct current
- dia..... diameter
- ft..... foot (feet)
- id..... inside diameter
- in..... inch (es)
- lg..... long (length)
- lh..... left hand
- mtg..... mounting(s)
- No. .... number(s)
- od ..... outside diameter
- rh..... right hand
- sh ..... sheet
- thd ..... thread(ed)
- thk ..... thick(ness)

### 7. Federal Supply Codes for Manufacturers

Code	Manufacturer
15653 .....	Kaynar Mfg. Co. Inc.
21585.....	Far Co.
24274 .....	American Cryogenics Inc.
60532 .....	Trane Co. The
61864 .....	United-Carr Inc.
61957.....	United Shoe Machinery Corp.
64731.....	Welco Industries Inc.
71286.....	Camlock Fastener Corp.
71400 .....	Bussman Mfg. Co.
74193.....	Heinemann Electric Co.
76530 .....	Cinch-Monadnock Division of United Carr Inc.
78553.....	Tinnerman Products Inc.
78643 .....	Tourex J.J.
79497.....	Western Rubber Co.
86797.....	Rogan Bros.
88044.....	Aeronautical Standards Group Dept. of Navy and Air Force
94222.....	South Chester Corp.
96906.....	Military Standards

### 8. Recommendations for Maintenance Publication Improvements

Report of errors, omissions, and recommendations for improving this publication by the individual user is encouraged.

Reports should be submitted on DA Form 2028 (Recommended Changes to Publications) and forwarded direct to Commanding General, U.S. Army

Mobility Equipment Command, ATTN: AMSME-MPP, 4300 Goodfellow Boulevard, St. Louis, Mo. 63120.

(1) FEDERAL STOCK NUMBER	(2) DESCRIPTION  USABLE ON CODE	(3) 15-DAY ORGANIZATIONAL MAINTENANCE ALLOWANCE			
		(a) 1-5	(b) 6-20	(c) 21-50	(d) 51-100
	SECTION II - PRESCRIBED LOAD ALLOWANCE				
	GROUP 01 - PANEL AND CASING ASSEMBLY				
	FILTER A31004 (21585)			2	2
	GROUP 02 - EVAPORATOR AND CONDENSER FAN MOTOR ASSEMBLY				
	MOTOR, AC, CONDITIONER FAN: CONDENSER, 400 CYCLE 7030-6 (64731)			2	6
6105-350-5024	MOTOR, AC, CONDITIONER FAN: CONDENSER, 50/60 CYCLE			2	6
	GROUP 03 - CONTROL PANEL AND JUNCTION BOX				
5920-260-3175	FUSE: 1.6 AMP, CARTRIDGE TYPE CONTROL PLATE		2	2	2
5920-939-5442	FUSE: 5 AMP, CARTRIDGE TYPE CONTROL PLATE			2	2
	GROUP 07 - EVAPORATOR, MIST ILLIMINATOR, HEATER AND DAMPER				
	FILTER, MIST ELIMINATOR 13216E4544 (24274)				2

(1) SMR CODE	(2) FEDERAL STOCK NUMBER	(3) DESCRIPTION  REF NUMBER & MFR CODE	(4) UNIT OF MEAS  USABLE ON CODE	(5) QTY INC IN UNIT	(6) 15-DAY ORGANIZATIONAL MAINTENANCE ALW				(7) ILLUS- TRATION	
					(a) 1-5	(b) 6-20	(c) 21-50	(d) 51-100	(a) FIG NO.	(b) ITEM NO.
		SECTION III - REPAIR PARTS FOR ORGANIZATIONAL MAINTENANCE GROUP 01 - PANEL AND CASING ASSEMBLY								
0	5305-984-6194	SCREW MACHINE: TOP PANEL MTG, NO. 8-32 THD SIZE, 5/8 IN. LG MS35206-246 (96906)	EA	20					1	1
0	5310-011-4986	WASHER FLAT: TOP PANEL MTG SCREW, NO. 8 SCREW SIZE MS27183-7 (96906)	EA	25					1	2
X20		PANEL TOP 84525-1-1 (60532)	EA	1					1	3
M 0		INSULATION D4525-3-1 (60532) MANUFACTURE FROM: RUBBER SHEET, 10 X 6 1/2 IN. REQUIRED FOR EA PANEL, FSN 5640-785-7888	SH	2					1	4
M 0		INSULATION C4525-2-1 (60532) MANUFACTURE FROM: RUBBER SHEET, 20 X 34 IN. REQUIRED, FSN 5640-785-7888	SH	1					1	5
M 0		GASKET D4525-5-1 (60532) MANUFACTURE FROM: RUBBER SHEET, 1 X 8 IN. REQUIRED FOR EA GASKET, FSN 5330-785-6609	SH	2					1	6
M 0		GASKET: TOP COVER D4525-4-1 (60532) MANUFACTURE FROM: RUBBER SHEET, 1 X 10 IN. REQUIRED FOR EA GASKET, FSN 5330-785-6609	SH	2					1	7
M 0		GASKET D4525-6-1 (60532) MANUFACTURE FROM: RUBBER SHEET, 1 X 20 IN. REQUIRED FOR EA GASKET, FSN 5330-785-6609	SH	2					1	8
X20		SCREW ASSEMBLY: PANEL MTG 17-11-304-12 (94222)	EA	1					1	9
X20		WASHER, RETAINING D4525-859-1 (60532)	EA	2					1	10
P 0	5325-641-1632	TURNLOCK, FASTENER: FRONT PANEL MTG 40S37-7 (71286)	EA	2	*	*	*	*	1	11
P 0	5340-598-1474	RING, RETAINING: FRONT PANEL MTG R4G (71286)	EA	2	*	*	*	*	1	12
P 0	5315-141-6355	PIN, TURNLOCK FASTENER: FRONT PANEL MOUNTING 99785-2 (76530)	EA	2	*	*	*	*	1	13
P 0	5325-641-1632	TURNLOCK, FASTENER 40S37-7 (71286)	EA	2	*	*	*	*	1	15
P 0	5315-141-6355	PIN, STRAIGHT, HEADLESS: TURNLOCK FASTENER 99785-2 (76530)	EA	4	*	*	*	*	1	16



(1) SMR CODE	(2) FEDERAL STOCK NUMBER	(3) DESCRIPTION  REF NUMBER & MFR CODE	(4) UNIT OF MEAS  USABLE ON CODE	(5) QTY INC IN UNIT	(6) 15-DAY ORGANIZATIONAL MAINTENANCE ALW				(7) ILLUS- TRATION	
					(a)	(b)	(c)	(d)	(a)	(b)
					1-5	6-20	21-50	51-100	FIG NO.	ITEM NO.
P 0	5340-598-1474	RING, RETAINING R4G (71286)	EA	4	*	*	*	*	1	17
X20		RIVET, SOLID AK42H (61957)	EA	8					1	18
P 0	5355-282-2045	EYELET, TURNLOCK FASTENER 4002N (71286)	EA	4	*	*	*	*	1	19
P 0	5325-641-1632	TURNLOCK, FASTENER 40S37-7 (71286)	EA	4	*	*	*	*	1	20
X20		SCREW ASSEMBLY 12-11-613-12 (94222)	EA	3					1	23
X20		STRIP, RETAINING D4525-146-1 (60532)	EA	1					1	24
M 0		INSULATION: LOWER FRONT PANEL MANUFACTURE FROM: RUBBER SHEET, 10 1/2 X 25 IN. REQUIRED, FSN 5330-505-6610	SH	1					1	25
M 0		INSULATION: LOWER FRONT PANEL MANUFACTURE FROM: RUBBER SHEET, 11 X 25 IN. REQUIRED, FSN 5330-505-6610	SH	1					1	26
M 0		INSULATION: LOWER PANEL D4525-143-1 (60532) MANUFACTURE FROM: RUBBER SHEET, 10 X 11 1/2 IN. REQUIRED, FSN 5330-505-6610	SH	1					1	27
M 0		INSULATION: LOWER PANEL D4525-144-1 (60532) MANUFACTURE FROM: RUBBER SHEET, 10 1/2 X 10 1/2 IN. REQUIRED, FSN 5330-505-6610	SH	1					1	28
M 0		INSULATION: LOWER PANEL D4525-142-1 (60532) MANUFACTURE FROM: RUBBER SHEET, 5 X 10 1/2 IN. REQUIRED, FSN 5330-505-6610	SH	1					1	29
M 0		GASKET C4525-147-1 (60532) MANUFACTURE FROM: RUBBER SHEET, 1 X 36 IN. REQUIRED FOR EA GASKET FSN 5330-785-6609	SH	2					1	30
M 0		GASKET C4525-1 47-2 (60532) MANUFACTURE FROM: RUBBER SHEET, 1 X 35 IN. REQUIRED FOR EA GASKET, FSN 5330-505-6609	SH	2					1	31
M 0		GASKET D4525-145-1 (60532) MANUFACTURE FROM: RUBBER SHEET, 3/8 X 31 /4 IN. REQUIRED, FSN 5330-505-6609	SH	1					1	32
X20		PANEL ASSEMBLY: LOWER FRONT B4525-148 ( 60532)	EA	1					1	33
X20		RIVET, BLIND AD43H (61957)	EA	12					1	34
X20		RECEPTACLE 244-16 (71286)	EA	4					1	35

(1) SMR CODE	(2) FEDERAL STOCK NUMBER	(3) DESCRIPTION  REF NUMBER & MFR CODE	(4) USABLE ON CODE	(5) UNIT OF MEAS QTY INC IN UNIT	(6) 15-DAY ORGANIZATIONAL MAINTENANCE ALW				(7) ILLUS- TRATION		
					(a)	(b)	(c)	(d)	(a)	(b)	
					1-5	6-20	21-50	51-100	FIG NO.	ITEM NO.	
0	4730-044-4668	PLUG, PIPE: BASE DRAIN, 1/2-14 THD SIZE PLU128 (60532)		EA	4					2	5
M 0		GASKET: BACK PANEL MANUFACTURE FROM: SYNTHETIC RUBBER, 1/2 IN. W, 26 IN. LG REQUIRED FOR EA GASKET, FSN 5330-505-6609		SH	2					2	11
M 0		INSULATION, RUBBER: FRONT CASING MANUFACTURE FROM: RUBBER SHEET, 2 X 4 IN. REQUIRED FOR EA GASKET, FSN 5330-543-2959		SH	2					2	12
M 0		GASKET: FRONT CASING MANUFACTURE FROM: RUBBER SHEET, 1 IN. W, 33 !N. LG REQUIRED, FSN 5640-785-7888		SH	1					2	13
M 0		INSULATION, RUBBER: FRONT CASING MANUFACTURE FROM: RUBBER SHEET, 2 IN. W, 33 IN. LG REQUI RED, FSN 5640-785-7888		SH	1					2	14
M 0		INSULATION, RUBBER: SIDE CASING MANUFACTURE FROM: RUBBER SHEET, 12 IN. W, 9 IN. LG REQUIRED, FSN 5640-785-7888		SH	1					2	15
M 0		INSULATION, RUBBER: SIDE CASING MANUFACTURE FROM: RUBBER SHEET, 14 IN. W, 18 IN. LG REQUI RED, FSN 5640-785-7888		SH	1					2	16
M 0		INSULATION, RUBBER: SIDE CASING MANUFACTURE FROM: RUBBER SHEET, 18 IN. W, 33 IN. LG REQUIRED, FSN 5640-785-7888		SH	1					2	17
M 0		INSULATION, RUBBER: SIDE CASING MANUFACTURE FROM: RUBBER SHEET, 12 IN. W, 22 IN. LG REQUIRED FOR EA GASKET, FSN 5640-785-7888		SH	2					2	18
M 0		INSULATION, RUBBER: SIDE CASING MANUFACTURE FROM: RUBBER SHEET, 20 IN. W, 26 IN. LG REQUIRED FOR EA GASKET, FSN 5640-785-7888		SH	2					2	19
M 0		INSULATION, RUBBER: SIDE CASING MANUFACTURE FROM: RUBBER SHEET, 8 IN. W, 28 IN. LG REQUIRED, FSN 5640-785-7888		SH	1					2	20
M 0		INSULATION, RUBBER: SIDE CASING MANUFACTURE FROM: RUBBER SHEET, 14 IN. W, 18 IN. LG REQUIRED, FSN 5640-785-7888		SH	1					2	21
M 0		INSULATION, RUBBER SIDE CASING MANUFACTURE FROM RUBBER SHEET, 8 IN. w, 14 IN. LG REQUIRED, FSN 5640-785-7888		SH	1					2	22
M 0		INSULATION, RUBBER: SIDE CASING MANUFACTURE FROM: RUBBER SHEET, 4 IN. W, 4 IN. LG REQUIRED, FSN 5640-785-7888		SH	1					2	23

(1) SMR CODE	(2) FEDERAL STOCK NUMBER	(3) DESCRIPTION  USABLE ON CODE	(4) UNIT OF MEAS	(5) QTY INC IN UNIT	(6) 15-DAY ORGANIZATIONAL MAINTENANCE ALW				(7) ILLUS- TRATION	
					(a)	(b)	(c)	(d)	(a) FIG NO.	(b) ITEM NO.
					1-5	6-20	21-50	51-100		
M 0		INSULATION, RUBBER: SIDE CASING MANUFACTURE FROM: RUBBER SHEET, 6 IN. W. 4 IN. LG REQUIRED, FSN 5640-785-7888	SH	1					2	24
M 0		INSULATION, RUBBER: INSIDE CASING MANUFACTURE FROM: RUBBER SHEET, 10 1/2 IN. W, 10 IN. LG REQUIRED FOR EA GASKET, FSN 5640-785-7888	SH	2					2	25
M 0		INSULATION, RUBBER: INSIDE CASING MANUFACTURE FROM: RUBBER SHEET, 1 IN. W, 14 IN. LG REQUI RED FOR EA GASKET, FSN 5640-785-7888	SH	2					2	26
M 0		INSULATION, RUBBER: BACK CASING MANUFACTURE FROM: RUBBER SHEET, 2 IN. W, 18 IN. LG REQUIRED, FSN 5640-785-7888	SH	1					2	27
M 0		INSULATION, RUBBER: BACK PANEL MANUFACTURE FROM: RUBBER SHEET, 8 IN. W, 16 IN. LG REQUIRED, FSN 5640-785-7888	SH	1					2	28
M 0		INSULATION, RUBBER: BACK PANEL MANUFACTURE FROM: RUBBER SHEET, 18 IN. W, 33 IN. LG REQUIRED, FSN 5640-785-7888	SH	1					2	29
M 0		INSULATION, RUBBER: BACK PANEL MANUFACTURE FROM: RUBBER SHEET, 14 IN. W, 3 IN. LG REQUIRED, FSN 5640-785-7888	SH	1					2	30
X20		SCREW ASSEMBLY: FILTER COVER ATTACHING 12-11-509-12 (94222)	EA	6					3	1
X20		WASHER, RETAINING: FILTER COVER ATTACHING SCREW 12-11014-12 (94222)	EA	6					3	2
X20		COVER ASSEMBLY FILTER C4525-202 (60532)	EA	2					3	3
X20		COVER, FILTER C4525-201-1 (60532)	EA	2					3	4
M 0		INSULATION: FILTER COVER D4525-200-1 (60532) MANUFACTURE FROM: INSULATION, RUBBER, 3 1/8 X 15 1/4 IN. REQUIRED FOR EA GASKET, FSN 5640-785-7588	SH	2					3	5
P 0		FILTER A31004 (21585)	EA	2	*	*	2	2	3	6
0	5305-984-6193	SCREW, MACHINE: HINGE TO DOOR, NO. 8-32 THD SIZE, 1/2 IN. LG MS35206-245 (96906)	EA	4					3	7
0	5310-811-3494	NUT, SELF-LOCKING: HINGE TO DOOR, NO. 8-32 THD SIZE MS21044N08 (96906)	EA	12					3	8
M 0		INSULATION D4525-750-2 (60532) MANUFACTURE FROM: INSULATION, RUBBER, 1 1/2 X 6 1/2 IN. REQUIRED FOR EA STRIP, FSN 5640-785-7888	SH	2					3	9

(1) SMR CODE	(2) FEDERAL STOCK NUMBER	(3) DESCRIPTION  REF NUMBER & MFR CODE	(4) USABLE ON CODE	(5) UNIT OF MEAS QTY INC IN UNIT	(6) 15-DAY ORGANIZATIONAL MAINTENANCE ALW				(7) ILLUS- TRATION		
					(a)	(b)	(c)	(d)	(a) FIG NO.	(b) ITEM NO.	
					1-5	6-20	21-50	51-100			
M 0		INSULATION D4525-750-1 (60532) MANUFACTURE FROM: INSULATION, RUBBER, 1 1/2 X 29 3/4 IN. REQUIRED, FSN 5640-785-7888		SH	1					3	10
X20		TURNLOCK, FASTENER: DEFLECTOR DOOR 40S37-34 (71286)		EA	2					3	12
X20		FASTENER: DEFLECTOR DOOR XX78328-20 (61864)		EA	2					3	13
X20		HINGE: DEFLECTOR DOOR MS35822-1E (96906)		EA	3					3	14
X20		RIVET, TUBULAR: DEFLECTOR DOOR MS16535-298 (96906)		EA	4					3	15
P 0	5320-956-7362	RIVET, BLIND: DEFLECTOR DOOR AD62H (61957)		EA	12	*	*	*	*	3	16
X20		SUPPORT, LEFT HAND: DEFLECTOR DOOR C4524-3450-4 (60532)		EA	1					3	17
X20		SUPPORT, RIGHT HANO: DEFLECTOR DOOR C4524-3450-3 (60532)		EA	1					3	18
X20		RIVET, SOLID: HIGH AND LOW PRESSURE SWITCH PANEL MTG AK4H (61957)		EA	8					3	19
X20		BOX, RELAY: PRESSURE SWITCH 13214E4208-1 (60532)		EA	1					3	20
M 0		GASKET: RELAY BOX MANUFACTURE FROM: SYNTHETIC RUBBER, 4 IN. REQUIRED FOR EA GASKET, FSN 5330-505-6609		SH	2					3	21
N 0		GASKET: RELAY BOX MANUFACTURE FROM: SYNTHETIC RUBBER, 10 IN. REQUIRED FOR EA GASKET, FSN 5330-505-6609		EA	2					3	22
0	5305-984-7351	SCREW, MACHINE: REAR PANEL MTG, NO. 10-32 THD SIZE, 7/8 IN. LG MS35191-275 (96906)		EA	28					3	23
0	5305-993-1848	SCREW, MACHINE: CANVAS COVER MTG, NO. 10-32 THD SIZE, 3/4 IN. LG MS35207-265 (96906)		EA	8					3	24
X20		CANVAS, COVER COV312 (60532)		EA	1					3	25
0	5305-984-6193	SCREW, MACHINE: HIGH AND LOW PRESSURE SWITCH PANEL COVER, NO. 8-32 THD SIZE, 1/2 IN. LG MS35206-245 (96906)		EA	8					3	26
X20		COVER: RELAY BOX PANEL B4525-196-2 (60532)		EA	1					3	27
X20		COVER: RELAY BOX PANEL B4525-196-4 (60532)		EA	1					3	28
X20		FASTENER: FAN COVER TARPULIN 408 (61864)		EA	5					3	29
X20		PANEL, CONDENSER FAN 13214E4208 (60532)		EA	1					3	30
0	5305-053-1114	SCREW, MACHINE: SIDE PANEL COVER, NO. 8-32 THD SIZE, 5/8 IN. LG MS24621-11 (96906)		EA	4					3	31
X20		COVER: SIDE PANEL 13214E3741-4 (60532)		EA	1					3	32

(1) SMR CODE	(2) FEDERAL STOCK NUMBER	(3) DESCRIPTION  REF NUMBER & MFR CODE	(4) USABLE ON CODE	(5) UNIT OF MEAS QTY INC IN UNIT	(6) 15-DAY ORGANIZATIONAL MAINTENANCE ALW				(7) ILLUS- TRATION		
					(a)	(b)	(c)	(d)	(a)	(b)	
					1-5	6-20	21-50	51-100	FIG NO.	ITEM NO.	
X20	5305-984-7351	CAP, DUST: AUXILIARY PCWER INLET CA2205-11 (60532)		EA	1					3	33
X20		ADAPTER: AUXILIARY POWER INLET MS3106R32-17S (96906)		EA	1					3	34
0		SCREW, MACHINE: COVER MTG, NO. 10-32 THD SIZE, 7/8 IN. LG MS35191-275 (96906)		EA	4					4	1
X20		GRILLE, INTAKE, LEFT HAND B4525-222-1 (60532)		EA	1					4	2
X20		GRILLE, INTAKE, RIGHT HAND B4525-222-2 (60532)		EA	1					4	3
M 0		GASKET D4525-223-1 (60532) MANUFACTURE FROM: RUBBER SHEET, 1 IN. W, 16 IN. LG REQUIRED FOR EA GASKET, FSN 5330-505-6609		SH	2					4	4
M 0		GASKET: INTAKE GRILLE D4525-224-1 ( 60532) MANUFACTURE FROM: RUBBER SHEET, 1 IN. W, 16 IN. LG REQUIRED FOR EA GASKET, FSN 5330-505-6609		SH	2					4	5
M 0		GASKET: INTAKE GRILLE D4525-224-1 (60532) MANUFACTURE FROM: RUBBER SHEET, 1 IN. W, 12 IN. LG REQUIRED FOR EA GASKET, FSN 5330-505-6609		SH	2					4	6
X20		GRILLE ASSEMBLY, DISCHARGE B4525-215 (60532)		EA	1					4	7
0		SCREW, MACHINE: DISCHARGE GRILLE MTG, NO. 8-32 THD SIZE, 3/4 IN. LG MS35207-265 (96906)		EA	8					4	8
X20	GRILLE, DISCHARGE A4525-793-1 (60532)		EA	1					4	9	
M 0	GASKET: DISCHARGE GRILLE D4525-216-1 (60532) MANUFACTURE FROM: RUBBER SHEET, 3/4 X 18 7/8 IN. REQUIRED FOR EA GRILLE, FSN 5330-505-6609		SH	2					4	10	
M 0	GASKET: DISCHARGE GRILLE D4525-217-1 (60532) MANUFACTURE FROM: RU8BER SHEET, 3/4 X 32 IN. REQUIRED, FSN 5330-505-6609		SH	1					4	11	
M 0	GASKET: DISCHARGE GRILLE D4525-218-1 (60532) MANUFACTURE FROM: RUBBER SHEET, 3/4 IN. W, 34 IN. LG REQUIRED, FSN 5330-505- 6609		SH	1					4	12	
X20	GROUP 02 - EVAPORATOR AND CONDENSER FAN AND MOTOR ASSEMBLY FAN AND MOTOR ASSEMBLY EVAPORATOR: 400 CYCLE B4525-673-2 (60532)	B	EA	1					5	1	
X20	FAN AND MOTOR ASSEMBLY EVAPORATOR: 50/60 CYCLE B4525-673-1 (60532)	A	EA	1					5	1	

(1) SMR CODE	(2) FEDERAL STOCK NUMBER	(3) DESCRIPTION  USABLE ON CODE	(4) UNIT OF MEAS	(5) QTY INC IN UNIT	(6) 15-DAY ORGANIZATIONAL MAINTENANCE ALW				(7) ILLUS- TRATION	
					(a) 1-5	(b) 6-20	(c) 21-50	(d) 51-100	(a) FIG NO.	(b) ITEM NO.
0	5305-639-8118	SCREW, CAP, HEXAGON HEAD: EVAPORATOR FAN MOTOR MTG, 3/8-16 THD SIZE, 1 1/4 IN. LG	EA	4					5	2
0	5310-209-0691	WASHER, FLAT: EVAPORATOR MOTOR MTG SCREW, 3/8 IN. SCREW SIZE	EA	4					5	3
0	5310-019-0358	WASHER, LOCK: EVAPORATOR FAN MTG SCREW, 3/8 IN. SCREW SIZE	EA	4					5	4
X20		SHIM: MOTOR MTG C4525-761-3 (60532)	EA	2					5	5
X20		SHIM: MOTOR MTG C4525-761-4 (60532)	EA	2					5	6
0	5305-013-9708	SCREW SET: CONDENSER FAN, 1/4-20 THD SIZE, 3/4 IN. LG SCR325 (60532)	EA	2					5	7
P 0	4130-834-5384	FAN, RIGHT HAND FAN320 (60532)	EA	1	*	*	*	*	5	8
P 0	4130-834-5382	FAN, LEFT HAND FAN319 (60532)	EA	1	*	*	*	*	5	9
P 0		MOTOR, AC, EVAPORATOR FAN: 50/60 CYCLE 4725-16 (64731) (ELECTRIC MOTORS ARE TO BE REQUISITIONED BY COMPLETE IDENTIFYING NOMENCLATURE. COMPLETE MOTOR AND FRAME NAMEPLATE DATA MUST BE SHOWN ON THE REQUISITION TO INSURE SUPPLY OF THE PROPER MOTOR)	A EA	1	*	*	*	*	5	10
P 0	6105-350-5021	MOTOR, AC, EVAPORATOR, FAN: 400 CYCLE 4725-18 (64731) (ELECTRIC MOTORS ARE TO BE REQUISITIONED BY COMPLETE IDENTIFYING NOMENCLATURE. COMPLETE MOTOR AND FRAME NAMEPLATE DATA MUST BE SHOWN ON THE REQUISITION TO INSURE SUPPLY OF THE PROPER MOTOR)	B EA	1	*	*	*	*	5	10
0	5315-730-4572	KEY: EVAPORATOR FAN MS20066 146 (96906)	EA	1					5	15
X20		BOX, CONNECTOR: EVAPORATOR FAN MOTOR 9315P (64731)	EA	1					5	20
0	5306-225-8499	SCREW, CAP, HEXAGON HEAD: CONDENSER FAN MOTOR MTG, 5/16-24 THD SIZE, 1 IN. LG MS90726-3*4 (96906)	EA	4					6	1
0	5310-959-4679	WASHER, LOCK: CONDENSER FAN MOTOR MTG SCREW, 5/16 IN. SCREW SIZE MS35340-45 (96906)	EA	4					6	2
0	5310-081-4219	WASHER, FLAT: CONDENSER FAN MOTOR MTG SCREW, 5/16 IN. SCREW SIZE MS27183-12 (96906)	EA	4					6	3
X20		SHIM: FAN MOTOR, 1 X 4 1/2 X .063 IN. D4525-235-1 (60532)	EA	2					6	4
X20		SHIM: FAN MOTOR, 1 X 4 1/2 X .032 IN. D4525-236-1 (60532)	EA	2					6	5
P 0		MOTOR, AC, CONDITIONER FAN: CONDENSER, 400 CYCLE 7030-6 (64731) (ELECTRIC MOTORS ARE TO BE REQUISITIONED BY COMPLETE IDENTIFYING NOMENCLATURE. COMPLETE MOTOR AND FRAME NAMEPLATE DATA MUST BE SHOWN ON THE REQUISITION TO INSURE SUPPLY OF THE PROPER MOTOR)	B EA	1	*	*	*	2	6	6
P 0	6105-350-5024	MOTOR, AC, CONDITIONER FAN: CONDENSER, 50/60 CYCLE 7045-3 (64731) (ELECTRIC MOTOR AND REPAIR PARTS ARE TO BE REQUISITIONED BY COMPLETE IDENTIFYING NOMENCLATURE COMPLETE MOTOR AND FRAME NAMEPLATE DATA MUST BE SHOWN ON THE REQUISITION TO INSURE SUPPLY OF THE PROPER REPAIR PARTS OR MOTOR)	A EA	1	*	*	*	2	6	6

(1) SMR CODE	(2) FEDERAL STOCK NUMBER	(3) DESCRIPTION  USABLE ON CODE	(4) UNIT OF MEAS	(5) QTY INC IN UNIT	(6) 15-DAY ORGANIZATIONAL MAINTENANCE ALW				(7) ILLUS- TRATION	
					(a) 1-5	(b) 6-20	(c) 21-50	(d) 51-100	(a) FIG NO.	(b) ITEM NO.
0	5305-175-3230	SCREW, DRIVE: INSTRUCTION PLATE MTG, MOTOR ROTATION MS21318-14 (96906)	EA	4					7	1
X20		PLATE: FAN ROTATION PLT266 (60532)	EA	1					7	2
0	5306-225-8497	SCREW CAP, HEXAGON HEAD: FAN GUARD MTG, 5/16-18 THD SIZE, 3/4 IN. LG MS90725-32 (96906)	EA	4					7	3
0	5310-959-4679	WASHER, LOCK: FAN GUARD MTG SCREW, 5/16 IN. SCREW SIZE MS35339-27 (96906)	EA	4					7	4
0	5310-081-4219	WASHER, FLAT: FAN GUARD MTG SCREW, 5/16 IN. SCREW SIZE MS27183-12 (96906)	EA	4					7	5
X20		GUARD, CONDENSER FAN A4525-229-2 (60532)	EA	1					7	6
X20		SCREW, SET: FAN TO MOTOR SHAFT, 1/4-20 THD SIZE 3/4 IN. LG SCR325 (60532)	EA	2					7	7
P 0		FAN ASSEMBLY, CONDENSER B604-1008 (60532)	EA	1	*	*	*	*	7	8
0	5306-225-9081	SCREW, CAP, HEXAGON HEAD: INLET RING/MTG MS90725-36 (96906)	EA	4					7	9
0	5310-959-4679	WASHER, LOCK: FAN INLET RING, 5/16 IN. SCREW SIZE MS35340-45 (96906)	EA	8					7	10
0	5310-081-4219	WASHER, FLAT: BLOWER FAN INLET RING MTG SCREW, 5/16 IN. SCREW SIZE MS27183-12 (96906)	EA	12					7	11
X20		RING, INLET D4525-186-1 (60532)	EA	2					7	12
X20		KEY, MACHINE: FAN MOTOR SHAFT MS20066-146 (96906)	EA	1					7	13
0	5310-655-6687	NUT, SELF-LOCKING, PLATE: FAN GUARD MTG SCREW, 5/16-24 THD SIZE F39155-5 (15653)	EA	2					7	18
		GROUP 03 - CONTROL PANELS AND JUNCTION BOX								
X20		KNOB: ROTARY SWITCH AND THERMOSTAT SWITCH RB175 (86797)	EA	2					8	2
X20		RIVET, BLIND: INSTRUCTION PLATE TO PANEL AD42H (61957)	EA	6					8	12
X20		PLATE INSTRUCTION C4525-208-1 (60532)	EA	1					8	13
X20		JUNCTION BOX ASSEMBLY: 50/60 CYCLE A4525-319-1 (60532)	A EA	1					9	1
X20		JUNCTION BOX ASSEMBLY: 400 CYCLE A4525-319-1 (60532)	B EA	1					9	1
0	5305-959-5237	SCREW ASSEMBLY: CONTROL PANEL MTG 12-11-203-12 (94222)	EA	4					9	2
X20		PANEL ASSEMBLY: JUNCTION BOX COVER: 50/60 CYCLE B4525-387-4 (60532)	A EA	1					9	3
X20		PANEL ASSEMBLY: JUNCTION BOX COVER, 400 CYCLE B4525-387-3 (60532)	B EA	1					9	3
M 0		GASKET: JUNCTION BOX COVER C4524-1255-17 (60532) MANUFACTURE FROM: NEOPRENE SPONGE, 3/8 X 14 IN. REQUIRED FOR EA GASKET, P/N ASTMD1056SCE43 (81346)	SH	2					9	4

(1) SMR CODE	(2) FEDERAL STOCK NUMBER	(3) DESCRIPTION  REF NUMBER & MFR CODE	(4) USABLE ON CODE	(5) UNIT OF MEAS QTY INC IN UNIT	(6) 15-DAY ORGANIZATIONAL MAINTENANCE ALW				(7) ILLUS- TRATION	
					(a)	(b)	(c)	(d)	(a)	(b)
					1-5	6-20	21-50	51-100	FIG NO.	ITEM NO.
X20		RIVET, BLIND: CONTROL PANEL INSTRUCTION PLATE AK42H (61957)	EA	1					9	5
X20		PLATE, INSTRUCTION: JUNCTION BOX C4525-206-1 (60532)	EA	1					9	6
0		SCREW, MACHINE: RECEPTACLE MTG, NO. 6-32 THD SIZE, 5/8 IN. LG MS35306-231 (96906)	EA	16					9	7
0	5310-889-2549	NUT, SELF-LOCKING, HEXAGON: RECEPTACLE MTG SCREW NO. 8-32 THD SIZE MS21045-08 (96906)	EA	12					9	8
X20		WIRING HARNESS: JUNCTION BOX TO CONTROL BOX AND CONDENSER MOTOR B4525-374 (60532)	EA	1					9	9
X20		WIRING HARNESS: EVAPORATOR MOTOR B4525-377 (60532)	EA	1					9	10
X20		WIRING HARNESS: COMPRESSOR MOTOR B4525-376 (60532)	EA	1					9	11
0	5305-010-0742	SCREW, MACHINE: CONNECTOR MTG, NO. 6-32 THD SIZE, 1 IN. LG	EA	1					9	12
X20		WIRING HARNESS: POWER INLET C4525-355 (60532)	EA	1					9	13
X20		RIVET, BLIND: STRAP NUT AD42H (61957)	EA	26					9	15
X20		NUT, SHEET, SPRING: JUNCTION BOX MTG BRACKET 17-10015-14 (94222)	EA	1					9	16
X20		NUT, SHEET SPRING: JUNCTION BOX COVER SCREW C13853-1420 (78553)	EA	4					9	17
0	5305-959-5237	SCREW, ASSEMBLED WASHER: JUNCTION BOX NTG, 1/4-20 THD SIZE, 3/4 IN. LG SCR282 (60532)	EA	4					9	18
X20		RIVET, BLIND: SHEET NUT TO MTG BRACKET AK42H (61957)	EA	2					9	19
0	5305-993-1818	SCREW, MACHINE: JUNCTION BOX NTG, NO. 10-32 THD SIZE 3/4 IN. LG MS35207-265 (96906)	EA	2					9	20
0	5310-721-7899	WASHER, LOCK: JUNCTION BOX MTG, NO. 10 SCREW SIZE MS35340-43 (96906)	EA	2					9	21
X20		BOX JUNCTION A4525-371 (60532)	EA	1					9	22
X20		RIVET, BLIND: JUNCTION BOX FASTENER AK42H (61957)	EA	26					9	23
P 0	5325-282-2045	EYELET, TURNLOCK FASTENER 4002N (71286)	EA	6					9	24
P 0	5340-829-0061	RING, RETAINING: COVER PANEL MTG SCREW C6974-14-41 (78553)	EA	1					9	25
0	5310-061-7326	NUT, SELF-LOCKING: CLAMP NTG SCREW, NO. 10-32 THD SIZE MS21045-3 (96906)	EA	1					10	1
0	5310-809-8546	WASHER, FLAT: CLAMP MTG, NO. 10 SCREW SIZE MS27183-8 (96906)	EA	4					10	2
0	5305-989-7435	SCREW, MACHINE: CLAMP MTG, NO. 10-32 THD SIZE, 5/8 IN. LG MS35207-264 (96906)	EA	1					10	3
X20		CLAMP, LOOP: CIRCUIT BREAKER RESET ROD MS21322-44 (96906)	EA	4					10	4
X20		CONTROL ASSEMBLY: CIRCUIT BREAKER RESET 13217E6815 (60532)	EA	1					10	5



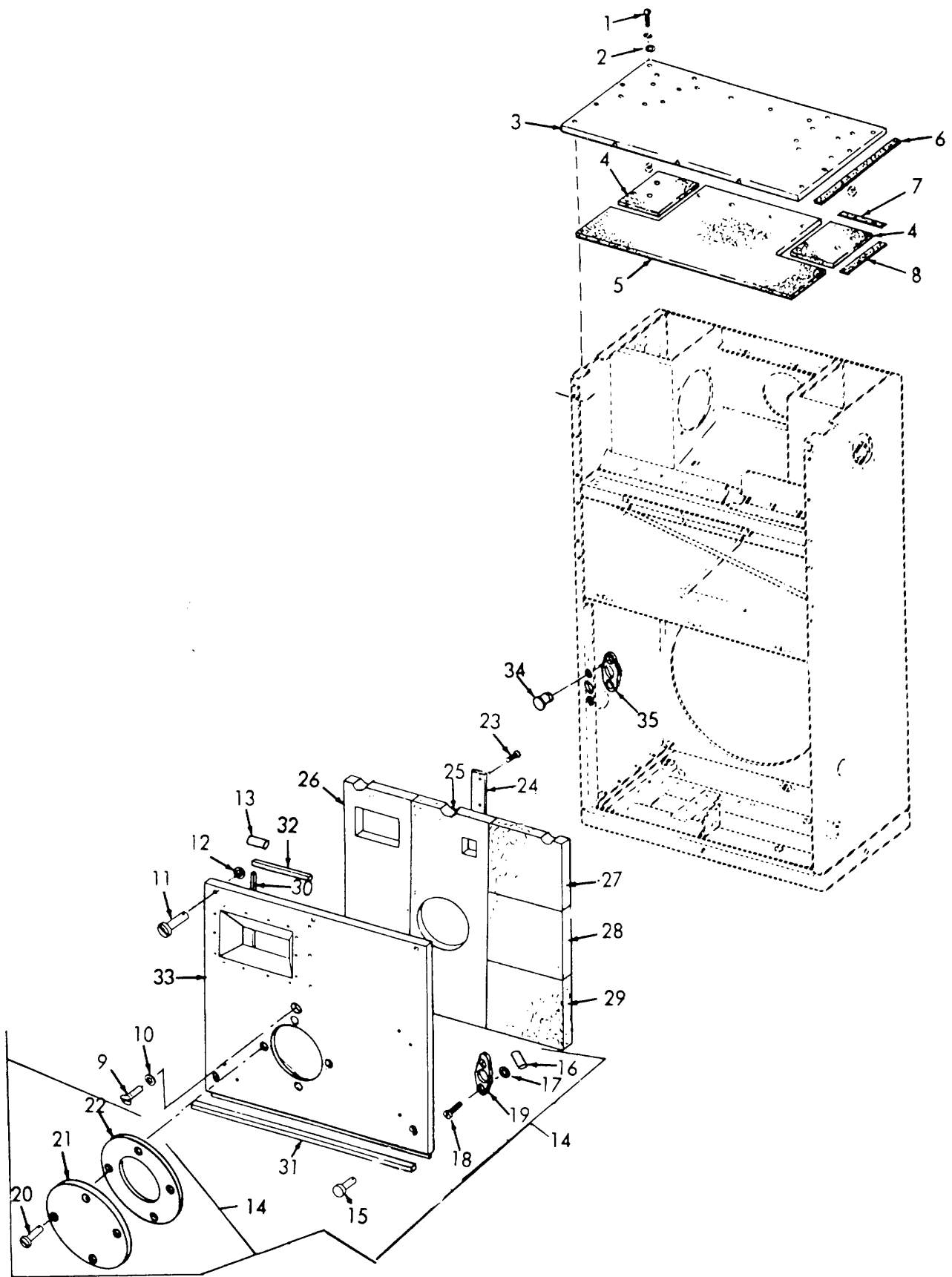
(1) SMR CODE	(2) FEDERAL STOCK NUMBER	(3) DESCRIPTION  REF NUMBER & MFR CODE	(4) UNIT OF MEAS  USABLE ON CODE	(5) QTY INC IN UNIT	(6) 15-DAY ORGANIZATIONAL MAINTENANCE ALW				(7) ILLUS- TRATION	
					(a) 1-5	(b) 6-20	(c) 21-50	(d) 51-100	(a) FIG NO.	(b) ITEM NO.
X20		CORE: END FITTING, RESET CONTROL ROD 13217E6817 (60532)	EA	1					10	6
X20		KNOB: CIRCUIT BREAKER RESET CONTROL ROD 13217E6816 (60532)	EA	1					10	7
X20		CONTROL ASSEMBLY: PUSH PULL, CIRCUIT BREAKER RESET 13217E6815-1 (60532)	EA	1					10	8
X20		RING, RETAINING E: ACTUATING PIN LOCK MS16633-1012 (96906)	EA	1					10	9
X20		WASHER, FLAT: ACTUATOR PIN, NO. 6 SCREW SIZE MS27183-6 (96906)	EA	1					10	10
X20		PIN, ACTUATOR: CIRCUIT BREAKER RESET 13217E6813 (60532)	EA	1					10	11
0		SCREW, MACHINE: CIRCUIT BREAKER MTG, NO. 6-32 THD SIZE, 3/8 IN. LG MS35338-41 (96906)	EA	4					10	12
0	5310-186-7454	WASHER LOCK: CIRCUIT BREAKER MTG SCREW, NO. 6 SCREW SIZE MS35338-41 (96906)	EA	4					10	13
0	5310-082-1404	WASHER FLAT: CIRCUIT BREAKER MTG SCREW, NO. 6 SCREW SIZE MS27183-6 (96906)	EA	4					10	14
P 0		COVER CIRCUIT BREAKER 06-10010 (74193)	EA	1	*	*	*	*	10	15
P 0	5920-280-3175	FUSE: 1.6 AMP, CARTRIDGE TYPE, CONTROL PLATE FNM1-6110 (71400)	EA	2	*	2	2	2	10	32
P 0	5920-939-5442	FUSE: 5 AMP, CARTRIDGE TYPE, CONTROL PLATE KAW5 (71400)	EA	1	*	*	2	2	10	33
0	5305-958-5451	SCREW, MACHINE: FUSEHOLDER MTG NO. 6-32 THD SIZE, 5/8 IN. LG MS35190-239 (96906)	EA	2					10	34
0	5310-082-1404	WASHER, FLAT: FUSEHOLDER MTG SCREW, NO. 6 SCREW SIZE MS27183-6 (96906)	EA	2					10	35
X20		FUSEHOLDER: CONTROL PLATE 2819 (71400)	EA	1					10	36
X20		FUSEHOLDER: CONTROL PLATE D4515-414 (71400)	EA	1					10	37
0	5310-050-3377	NUT, SELF-LOCKING: GROUND LEAD ATTACHING, 1/4-28 THD SIZE	EA	1					10	42
M 0		LEAD, ELECTRICAL: JUNCTION BOX GROUND A4525-291-74 (60532) MANUFACTURE FROM: TERMINAL LUG, 2 EA, FSN 5940-557-4341 WIRE ELECTRICAL 25 IN. REQUIRED, FSN 6145-184-3876	FT	1					10	43
0	5310-809-8546	WASHER, FLAT: GROUND LEAD MTG SCREW, NO. 10 SCREW SIZE MS27183-8 (96906)	EA	4					10	44
0	5305-989-7434	SCREW, MACHINE: GROUND LEAD, NO. 10-32 THD SIZE, 1/2 IN. LG MS35207-263 (96906)	EA	1					10	45
0	5310-061-7326	NUT, SELF-LOCKING: WIRING HARNESS CLAMP SCREW, NO. 10-32 THD SIZE MS21045-3 (96906)	EA	1					13	1
0	5310-809-8546	WASHER, FLAT: WIRING HARNESS CLAMP SCREW, NO. 10 SCREW SIZE MS27183-8 (96906)	EA	2					13	2

(1) SMR CODE	(2) FEDERAL STOCK NUMBER	(3) DESCRIPTION  REF NUMBER & MFR CODE	(4) UNIT OF MEAS	(5) QTY INC IN UNIT	(6) 15-DAY ORGANIZATIONAL MAINTENANCE ALW				(7) ILLUS- TRATION	
					(a) 1-5	(b) 6-20	(c) 21-50	(d) 51-100	(a) FIG NO.	(b) ITEM NO.
P 0	5305-989-7435	SCREW, MACHINE: WIRING HARNESS CLAMP, NO. 10-32 THD SIZE, 5/8 IN. LG MS35207-264 (96906)	EA	1					13	3
X20		CLAMP, LOOP: REMOTE CONTROL WIRING HARNESS MS21322-36 (96906)	EA	4					13	4
0	5310-889-2549	NUT, SELF-LOCKING, HEXAGON: RECEPTACLE MTG SCREW, NO. 8-32 THD SIZE MS210H5-08 (96906)	EA	2					13	7
0	5310-011-4986	WASHER, FLAT: CONNECTOR MTG SCREW, NO. 8 SCREW SIZE MS27183-7 (96906)	EA	2					13	8
0	5305-984-6191	SCREW, MACHINE: CONNECTOR MTG, NO. 8-32 THD SIZE, 3/8 IN. LG MS35206-243 (96906)	EA	8					13	9
X20		CONNECTOR, RECEPTACLE, ELECTRICAL MS3100R32-17P (96906)	EA	1					13	10
X20		CONNECTOR, RECEPTACLE, ELECTRICAL MS3100R18-1S (96906)	EA	1					13	11
0	5310-889-2549	NUT, SELF-LOCKING: CONNECTOR MTG SCREW, NO. 8-32 THD SIZE MS210H5-08 (96906)	EA	8					13	12
0	5310-011-4986	WASHER, FLAT: CONNECTOR MTG SCREW, NO. 8 SCREW SIZE MS27183-7 (96906)	EA	2					13	13
0	5305-984-6191	SCREW, MACHINE: CONNECTOR MTG, NO. 8-32 THD SIZE, 3/8 IN. LG MS35206-243 (96906)	EA	8					13	14
X20		CONNECTOR, RECEPTACLE, ELECTRICAL: REMOTE CONTROL MS3100R32-17P (96906)	EA	1					13	15
X20		CONNECTOR, RECEPTACLE, ELECTRICAL: REMOTE CONTROL MS3100R18-1S (96906)	EA	1					13	16
X20		WIRING HARNESS: CONTROL PANEL 13214E4155-188 (60532)	EA	1					13	17
X20		WIRING HARNESS 13214E4155-185 (60532)	EA	1					13	18
X20		WIRING HARNESS 13214E4155-187 (60532)	EA	1					13	19
X20		WIRING HARNESS: OUTSIDE POWER SOURCE 13214E4155-183 (60532)	EA	1					13	20
X20		WIRING HARNESS 13214E4155-23 (60532)	EA	1					13	23
X20		WIRING HARNESS: COMPRESSOR MOTOR 13214E4155-24 (60532)	EA	1					13	24
X20		WIRING HARNESS 13214E4155-186 (60532)	EA	1					13	25
P 0		BLOCKOFF ASSEMBLY: REMOTE CONTROL ADAPTER 84525-249-22 (60532)	EA	1	*	*	*	*	13	26
0	5310-889-2544	NUT, SELF-LOCKING, HEXAGON: BLOCKOFF COVER MTG, NO. 6-32 TH SIZE MS21045-06 (96906)	EA	8					13	27
0	5305-889-3000	SCREW, MACHINE: BLOCKOFF COVER MTG, NO. 6-32 THD SIZE MS35206-230 (96906)	EA	8					13	28
X20		COVER: BLOCKOFF ADAPTER B4525-196-2 (60532)	EA	1					13	29
X20		COVER: BLOCKOFF ADAPTER B4525-196-4 (60532)	EA	1					13	30

(1) SMR CODE	(2) FEDERAL STOCK NUMBER	(3) DESCRIPTION  REF NUMBER & MFR CODE	(4) USABLE ON CODE	(5) UNIT OF MEAS QTY INC IN UNIT	(6) 15-DAY ORGANIZATIONAL MAINTENANCE ALW				(7) ILLUS- TRATION		
					(a)	(b)	(c)	(d)	(a)	(b)	
					1-5	6-20	21-50	51-100	FIG NO.	ITEM NO.	
X1		BRACKET C4525-241-22 (60532)		EA	1					13	31
0	5305-989-7434	GROUP 04 - COMPRESSOR, RECEIVER AND VALVES SCREW, MACHINE: TUBE SUPPORT CLAMP, NO. 10-32 THD SIZE, 1/2 IN. LG MS35207-263 (96906)		EA	7					15	10
X20		CLAMP, LOOP: TUBE SUPPORT CMP91 (60532)		EA	2					15	11
0	4730-908-3194	CLAMP, HOSE: EVAPORATOR DRAIN MS35842-11 (96906)		EA	2					15	12
M 0		HOSE, DRAIN: EVAPORATOR COIL MANUFACTURE FROM: HOSE, RUBBER, 1 1/2 IN. REQUIRED, FSN 4720-277-8994		FT	1					15	13
X20		TUBE, DRAIN: EVAPORATOR B4525-280 (60532)		EA	1					15	14
0	5315-234-1856	PIN, COTTER: DRAIN TUBE, 1/16 IN. DIA, 1 IN. LG MS24665-155 (96906)		EA	1					15	27
X20		SPRING, HELICAL, COMPRESSION: EVAPORATOR DRAIN TUBE SPG55 (60532)		EA	1					15	28
X20		BALL, BEARING: EVAPORATOR DRAIN TUBE BAL25 (60532)		EA	1					15	29
X20		TUBE ASSEMBLY, DRAIN: EVAPORATOR C4525-281 (60532)		EA						15	30
0	5305-984-6191	GROUP 06 - DEHYDRATOR, MOTOR MOUNTING AND SIGHT GLASS		EA	2					17	33
0	5310-011-4986	SCREW, MACHINE: SIGHT GLASS GUARD BRACKET MTG, NO. 8-32 THD SIZE, 3/8 IN. LG MS35206-243 (96906)		EA	73					17	34
0	5310-811-3494	WASHER, FLAT: SIGHT GLASS GUARD BRACKET MTG SCREW, NO. 8 SCREW SIZE MS27183-7 (96906)		EA	2					17	35
X20		NUT, SELF-LOCKING: SIGHT GLASS GUARD BRACKET MTG SCREW, NO. 8-32 THD SIZE MS21044N08 (96906)		EA	1					17	36
0	5305-928-9867	GUARD, BRACKET: SIGHT GLASS 13211E4245 (60532)		EA	7					19	1
0	5310-010-6496	SCREW, MACHINE: CONDENSER INLET GRILLE MTG, NO. 8-32 THD SIZE, 1 IN. LG MS35207-210 (96906)		EA	7					19	2
0	5310-011-4986	WASHER, LOCK: GROUND LEAD ATTACHING, NO. 8 SCREW SIZE MS35339-43 (96906)		EA	2					19	3
X20		WASHER, FLAT: GROUND LEAD ATTACHING, NO. 8 SCREW SIZE MS27183-7 (96906)		EA	1					19	4
X20		FILTER, AIR: DAMPER 13214E4106 (60532)		EA	1					19	5
0	5310-889-2549	COVER, SUPPORT: DAMPER FILTER C0V334 (60532)		EA	10					19	6

(1) SMR CODE	(2) FEDERAL STOCK NUMBER	(3) DESCRIPTION  USABLE ON CODE	(4) UNIT OF MEAS	(5) QTY INC IN UNIT	(6) 15-DAY ORGANIZATIONAL MAINTENANCE ALW				(7) ILLUS- TRATION	
					(a) 1-5	(b) 6-20	(c) 21-50	(d) 51-100	(a) FIG NO.	(b) ITEM NO.
0	5305-984-6194	SCREW, MACHINE: DAMPER BOX MTG, NO. 8-32 THD SIZE 5/8 IN. LG MS35206-246 (96906)	EA	4					19	7
X20		DAMPER ASSEMBLY: FRESH AIR GRILLE C4525-510 (60532)	EA	1					19	8
0	5310-061-7326	NUT, SELF-LOCKING, HEXAGON: DAMPER ARM, NO. 10-32 THD SIZE MS21045-3 (96906)	EA	2					19	9
X20		BALL, JOINT: DAMPER CONTROL LINKAGE EC103-10-32 (78643)	EA	2					19	10
X20		ROD, LINKAGE: DAMPER CONTROL D4525-493-1 (60532)	EA	1					19	11
0	5305-984-6194	SCREW, MACHINE: FRESH AIR GRILLE, NO. 8-32 THD SIZE, 5/8 IN. LG MS35206-246 (96906)	EA	6					19	12
0	5310-685-6855	WASHER, LOCK: FRESH AIR GRILLE MS35790-9 (96906)	EA	6					19	13
X20		GRILLE: FRESH AIR INLET 13214E4259 (60532)	EA	1					19	14
0	5310-011-4986	WASHER FLAT: FRESH AIR GRILLE MTG SCREW, NO. 8 SCREW SIZE MS27183-7 (96906)	EA	6					19	15
X20		PIN, STRAIGHT HEADED: DAMPER GEAR HOUSING MS171499 (96906)	EA	1					19	18
X20		SPACER: WORM GEAR, DAMPER CONTROL D4525-794-1 (60532)	EA	2					19	19
X20		WASHER, SPRING: DAMPER CONTROL D4524-6339-1 (60532)	EA	2					19	20
0	5305-175-3230	SCREW, DRIVE: INSTRUCTION PLATE MTG MS21318-14 (96906)	EA	4					19	21
X20		PLATE INSTRUCTION, DAMPER CONTROL C4525-212-1 (60532)	EA	1					19	22
0	5305-724-6799	SETSCREW: CONTROL KNOB, NO. 10-32 THD SIZE, 3/8 IN. LG MS51964-51 (96906)	EA	2					19	23
X20		KNOB: DAMPER GRILLE CONTROL LEVER C4525-228-1 (60532)	EA	2					19	24
X20		GROMMET, RUBBER: DAMPER CONTROL KNOB G1152 (79497)	EA	1					19	25
X20		ROD: LINKAGE CONTROL D4524-6057-1 (60532)	EA	1					19	26
0	5305-063-3503	SCREW, MACHINE: DAMPER GEAR MS24693S50 (96906)	EA	3					19	27
0	5310-685-6855	WASHER, LOCK: DAMPER GEAR SCREW MS35790-9 (96906)	EA	3					19	28
X20		ARM: DAMPER LINKAGE C4524-6065-1 (60532)	EA	1					19	29
X20		GEAR AND LEVER ASSEMBLY: DAMPER CONTROL C4525-644 (60532)	EA	1					19	30
0	5310-081-4219	WASHER, FLAT: DAMPER GEAR, 5/16 IN. SCREW SIZE MS27183-12 (96906)	EA	1					19	31
0	5315-663-2329	PIN, LOCKING: WORM GEAR MS171499 (96906)	EA	1					19	32
X20		GEAR, WORM, WHEEL: DAMPER CONTROL D4524-6036-1 (60532)	EA	1					19	33
0	5310-081-4219	WASHER, FLAT: DAMPER GEAR, 5/16 IN. SCREW SIZE MS27183-12 (96906)	EA	1					19	34
X20		WASHER, SPRING: WORM GEAR, 5/8 IN. SCREW SIZE D4524-6339-1 (60532)	EA	1					19	35

(1) SMR CODE	(2) FEDERAL STOCK NUMBER	(3) DESCRIPTION  REF NUMBER & MFR CODE	(4) USABLE ON CODE	(5) UNIT OF MEAS QTY INC IN UNIT	(6) 15-DAY ORGANIZATIONAL MAINTENANCE ALW				(7) ILLUS- TRATION	
					(a) 1-5	(b) 6-20	(c) 21-50	(d) 51-100	(a) FIG NO.	(b) ITEM NO.
0	5310-061-7326	NUT, SELF-LOCKING: DAMPER CONTROL HOUSING MTG SCREW, NO. 10-32 THD SIZE MS21044N3 (96906)	EA	4					19	36
0	5305-993-1848	SCREW, MACHINE: DAMPER HOUSING MTG, NO. 10-32 THD SIZE, 3/4 IN. LG MS35207-265 (96906)	EA	4					19	37
0	5310-809-8546	WASHER, FLAT: DAMPER CONTROL HOUSING MTG, NO. 10 SCREW SIZE MS27183-8 (96906)	EA	4					19	38
X20		HOUSING, GEAR: GRILLE DAMPER D4525-579 (60532)	EA	1					19	39
X20		NUT, SELF-LOCKING: GEAR HOUSING SCREW MS21044N3 (96906)	EA	4					19	40
0	5310-010-6497	WASHER, LOCK: DAMPER GEAR HOUSING SUPPORT SCREW NO. 10 SCREW SIZE MS35338-43 (96906)	EA	4					19	41
0	5305-993-1851	SCREW, MACHINE: DAMPER GEAR HOUSING SUPPORT MTG, NO. 10-32 THD SIZE, 1 IN. LG MS35207-267 (96906)	EA	4					19	42
X20		BRACKET, SUPPORT: DAMPER GEAR HOUSING 13214E4509 (60532)	EA	1					19	43
0	5305-984-6194	SCREW, MACHINE: CARBURETOR FILTER COVER MTG, NO. 8-32 THD SIZE, 5/8 IN. LG MS35206-246 (96906)	EA	4					19	45
0	5310-011-4986	WASHER, FLAT: CARBURETOR FILTER COVER MTG SCREW, NO. 8 SCREW SIZE MS27183-7 (96906)	EA	4					19	46
0	5310-685-6855	WASHER, LOCK: CARBURETOR FILTER COVER MTG SCREW MS35338-42 (96906)	EA	4					19	47
X20		COVER BARE: CARBURETOR INLET FILTER D4525-128-3 (60532)	EA	1					19	48
M 0		INSULATION: CARBURETOR INLET COVER D4525-129-3 (60532) MANUFACTURE FROM: INSULATION, RUBBER, 5 3/4 X 5 1/4 IN. REQUIRED, FSN 5640-198-7255	SH	1					19	49
0	5310-061-7326	NUT, SELF-LOCKING, HEXAGON: DAMPER SUPPORT MTG, NO. 10-32 THD SIZE MS21045-3 (96906)	EA	4					19	50
0	5310-809-4038	WASHER, FLAT: SUPPORT BRACKET SCREW, NO. 10 SCREW SIZE MS27183-10 (96906)	EA	4					19	51
0	5305-993-1848	SCREW, MACHINE: SUPPORT BRACKET MTG, NO. 10-32 THD SIZE, 3/4 IN. LG MS35207-265 (96906)	EA	8					19	52
X20		BRACKET, SUPPORT: DAMPER LINKAGE C4525-492-1 (60532)	EA	1					19	53
		GROUP 07 - EVAPORATOR, MIST ELIMINATOR, HEATER AND DAMPER								
P 0		FILTER, MIST ELIMINATOR 13216E4544 (24274)	EA	1	*	*	*	2	20	1



ME 4120-270-35P/1

Figure 1. Panels and Insulation

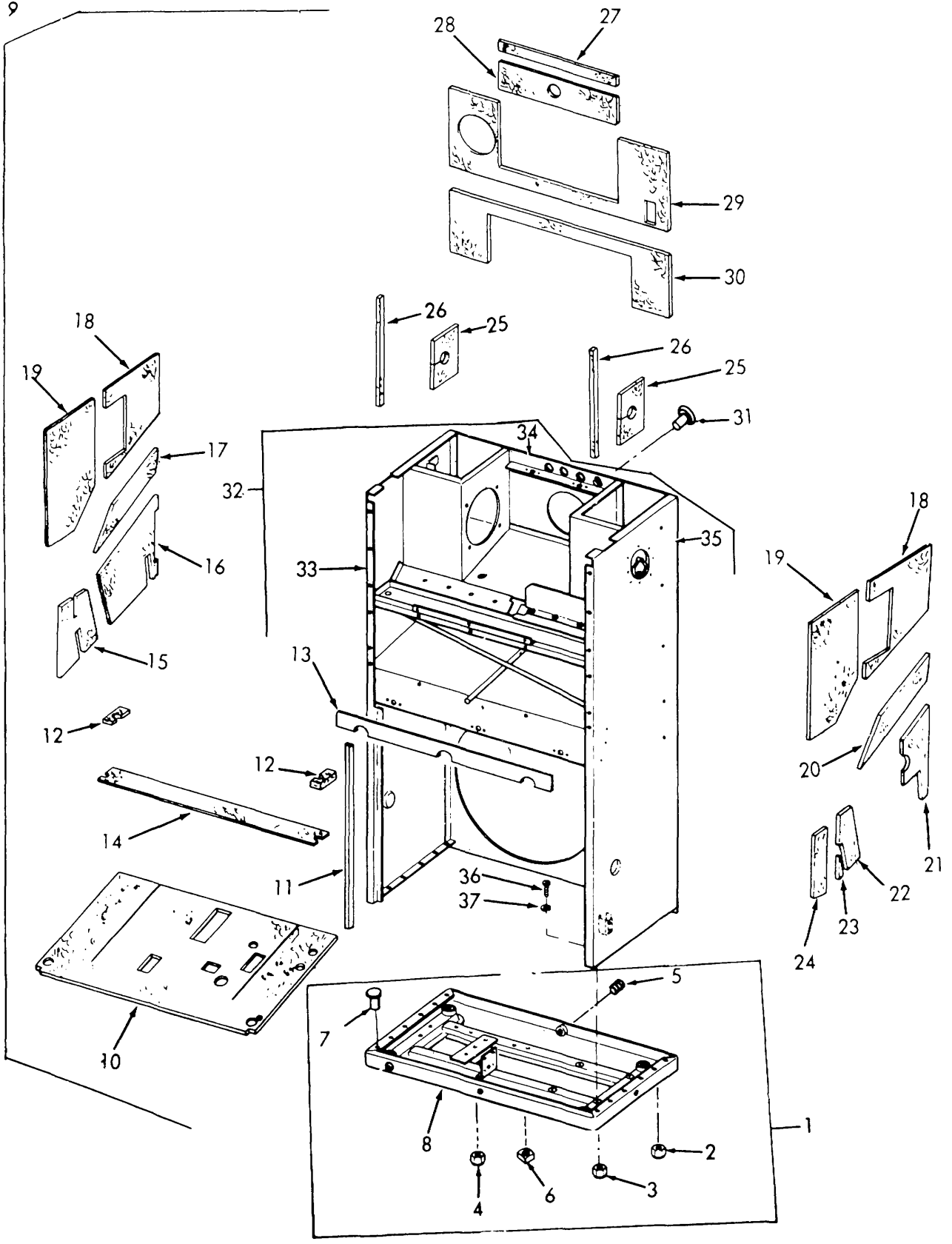
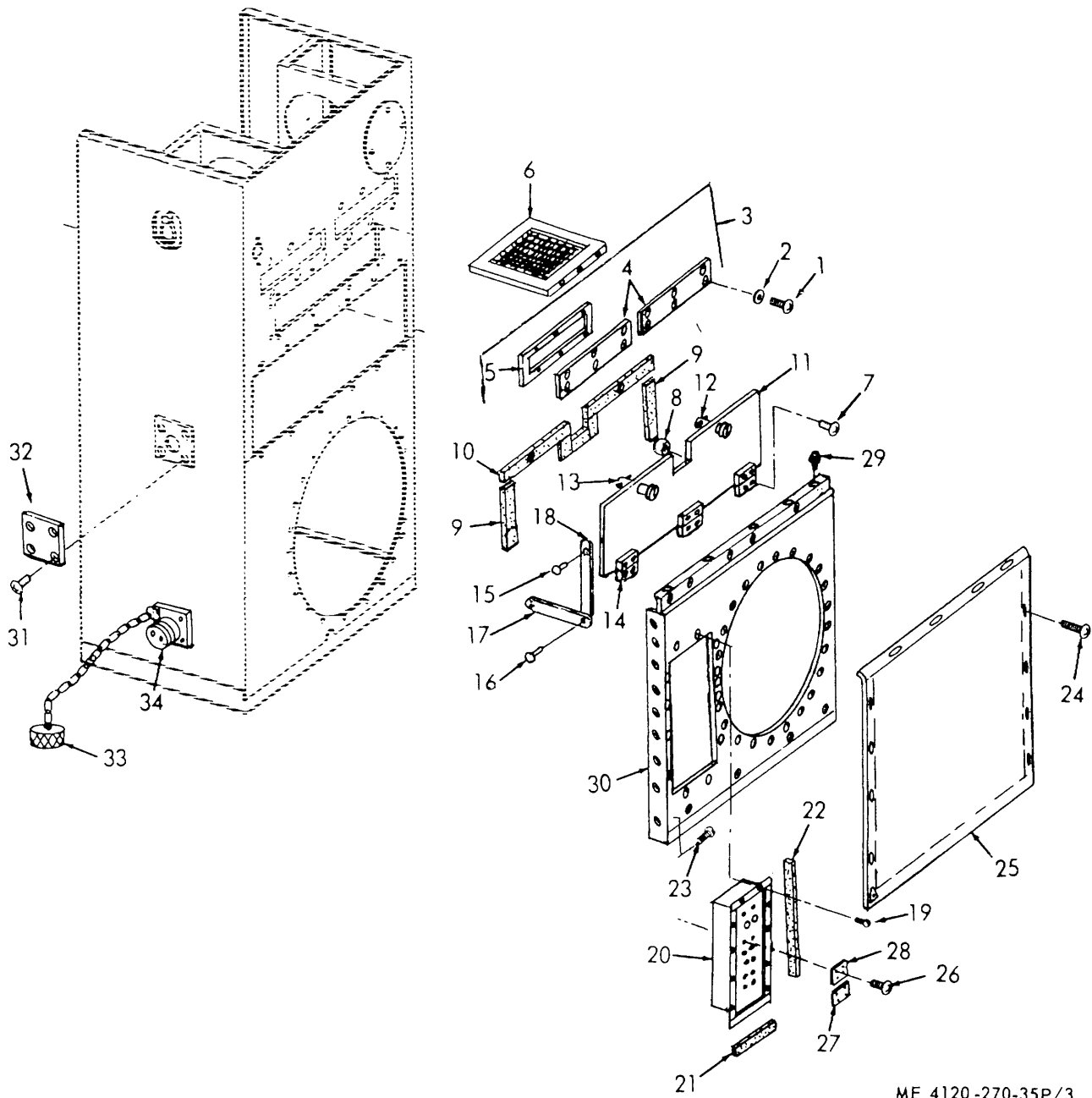


Figure 2. Casing and Insulation

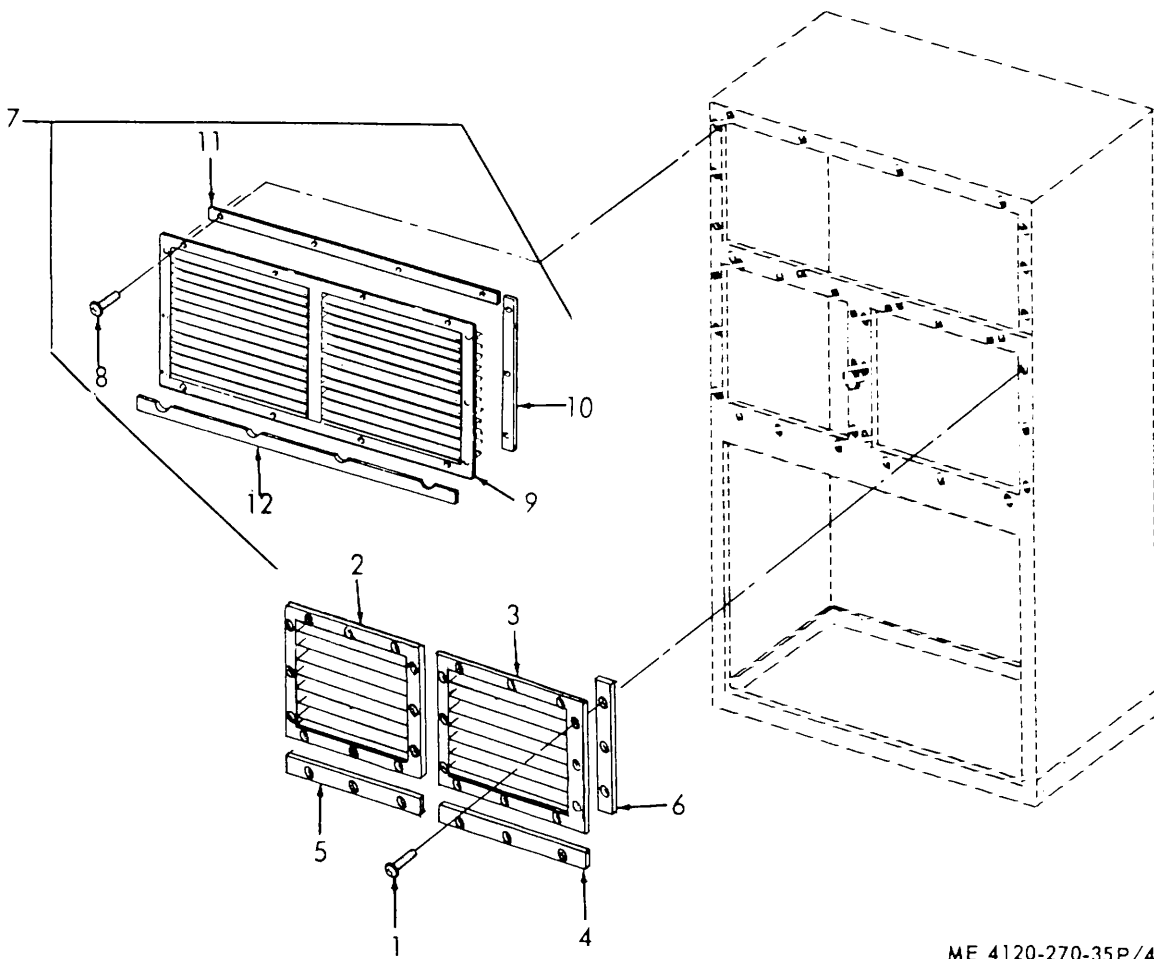
ME 4120-270-35P/2



ME 4120-270-35P/3

**Figure 3. Covers, Filters, Tarpolins and Plugs**





ME 4120-270-35P/4

**Figure 4. Grilles and Gaskets**

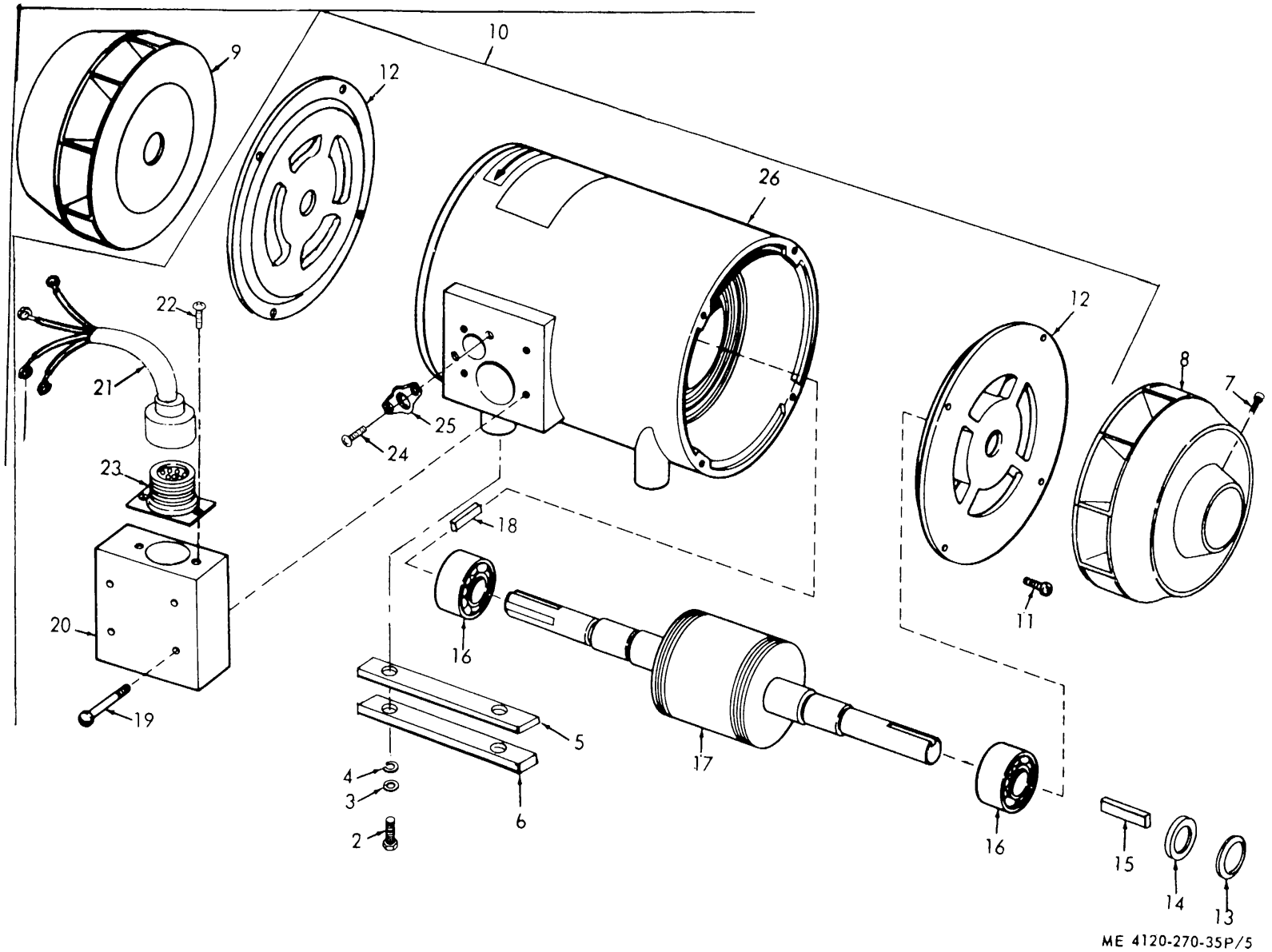
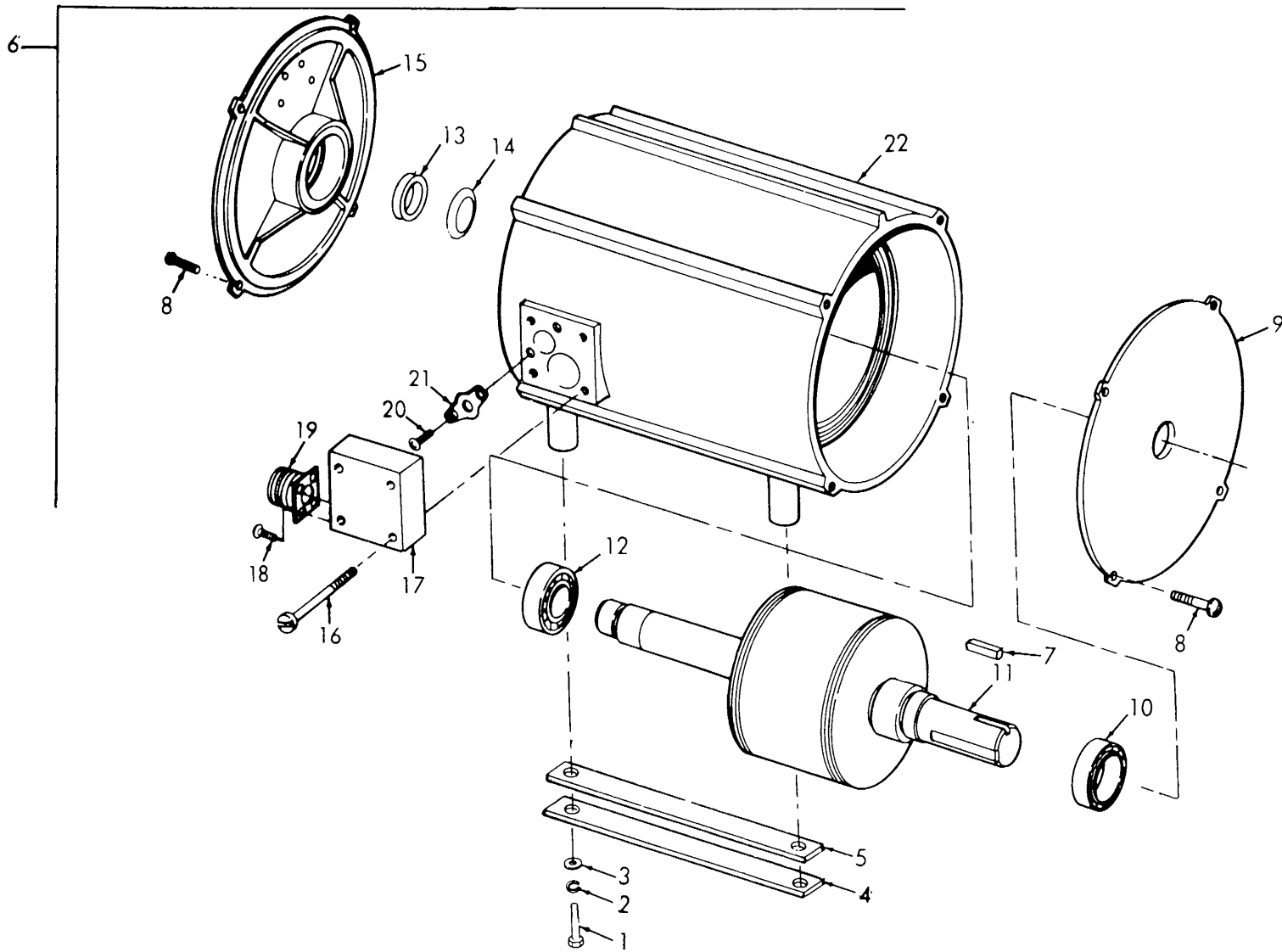
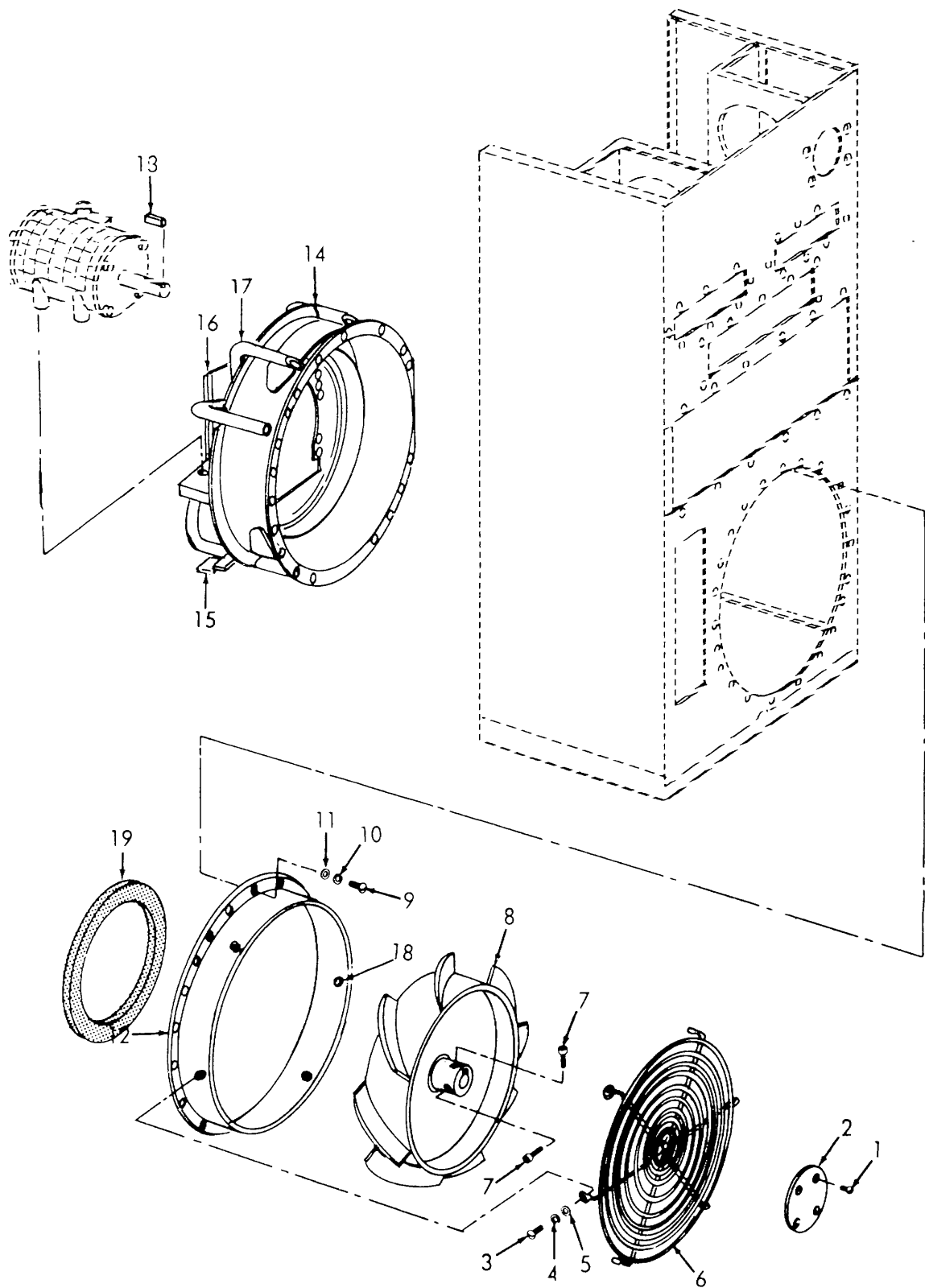


Figure 5. Evaporator Fan and Motor



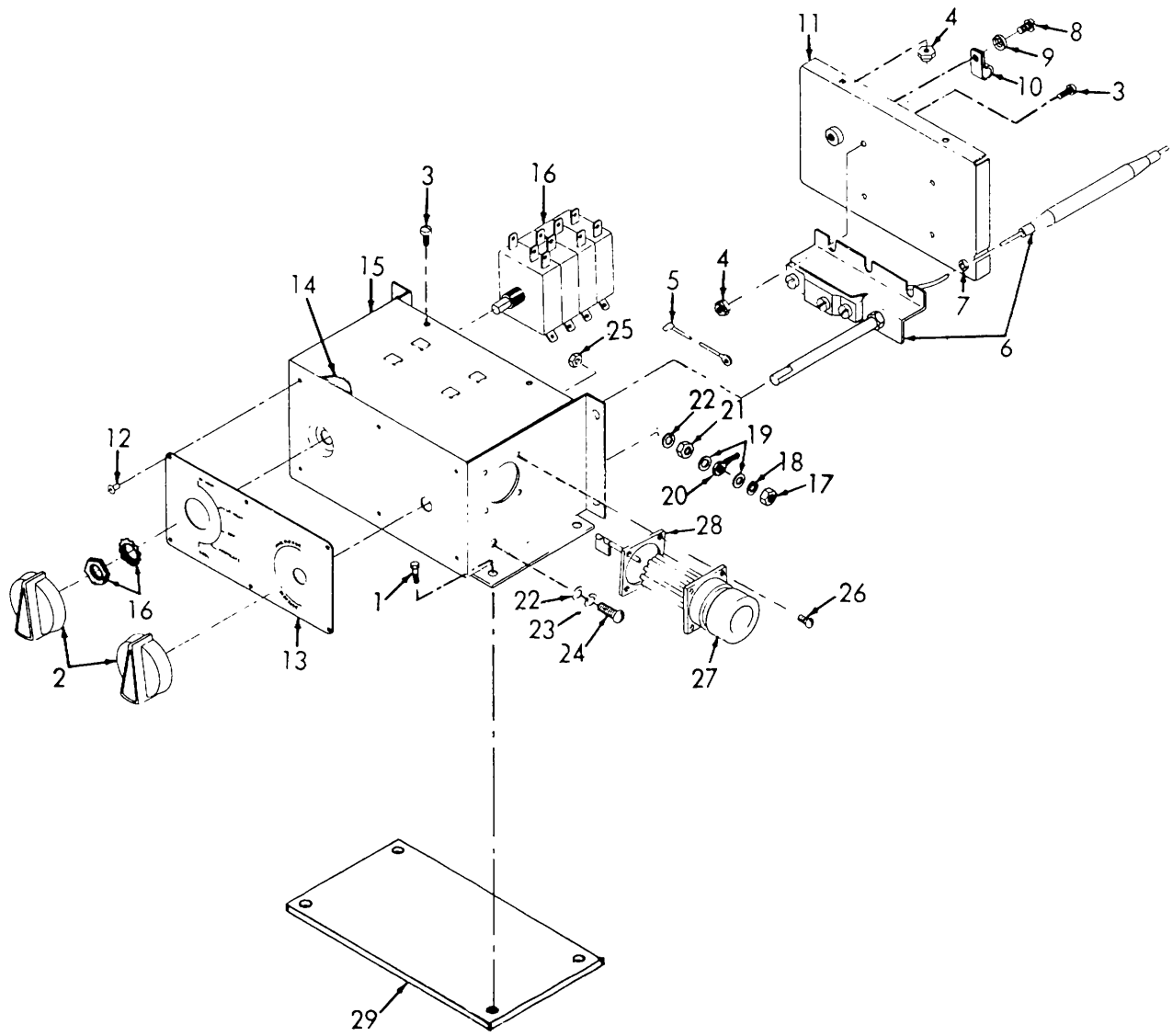
ME 4120-270-35P/6

Figure 6. Condenser Fan Motor



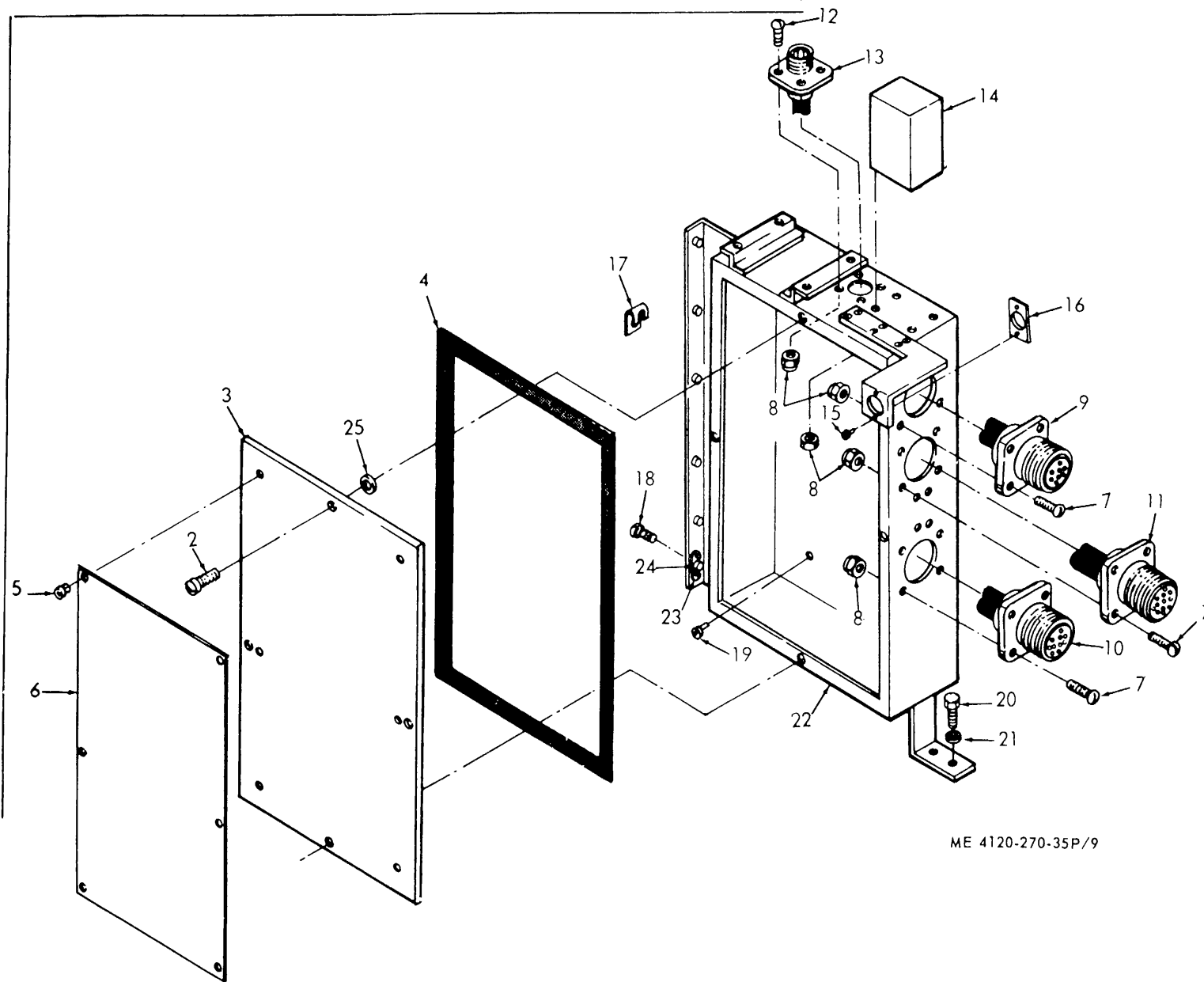
ME 4120-270-35P/7

Figure 7. Condenser Fan and Supports



ME 4120-270-35P/8

Figure 8. Control Panel



ME 4120-270-35P/9

Figure 9. Junction Box

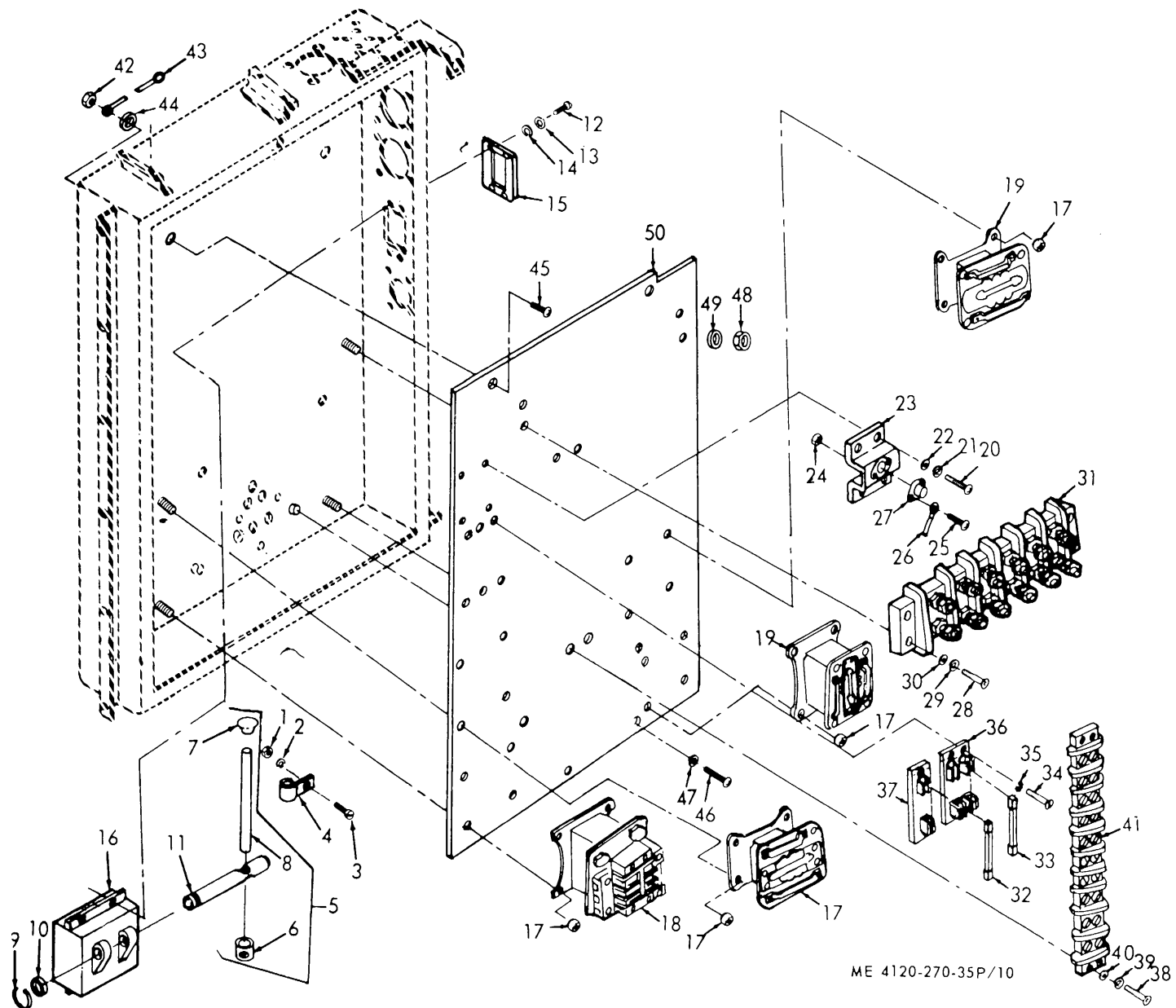
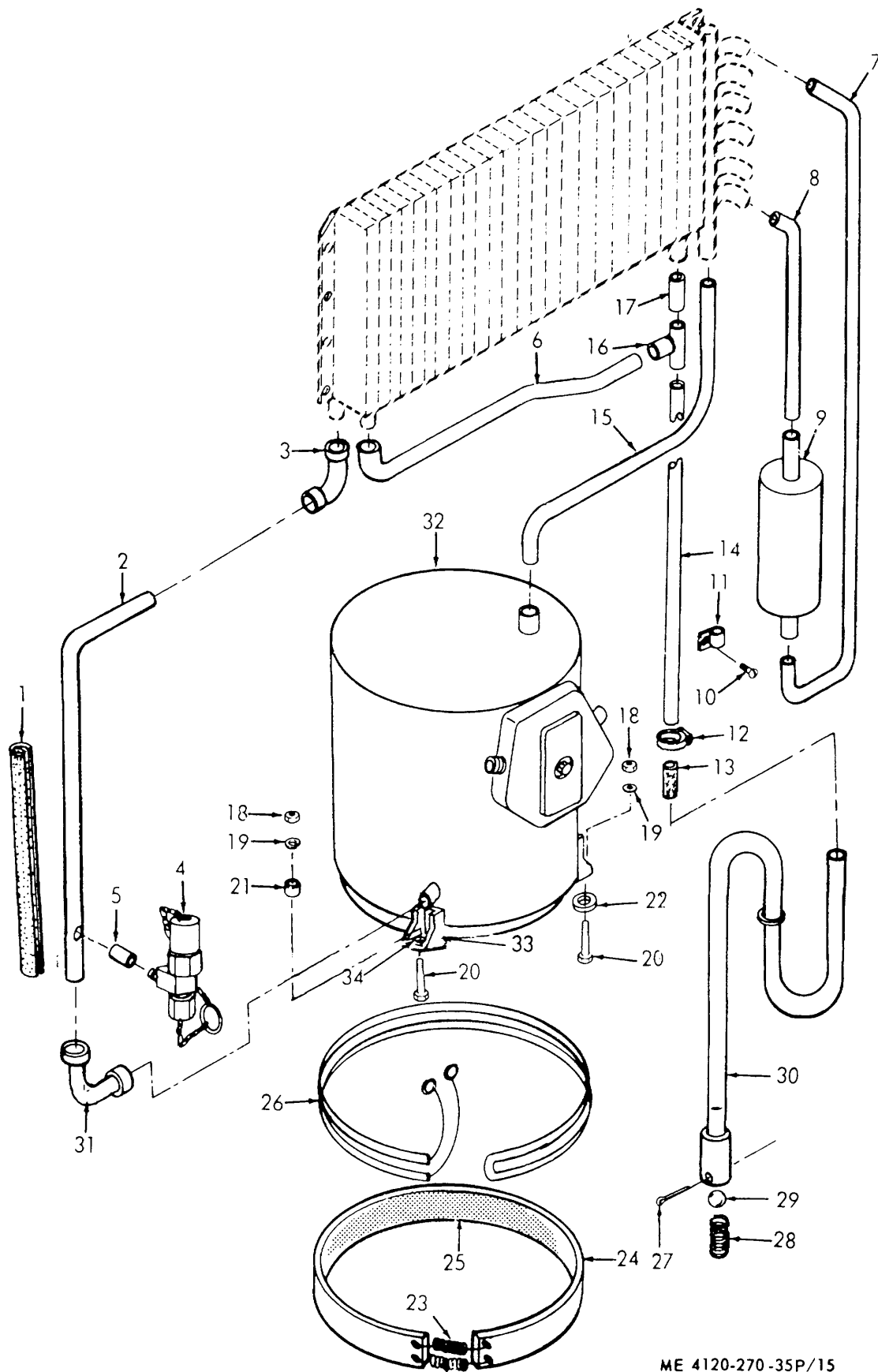


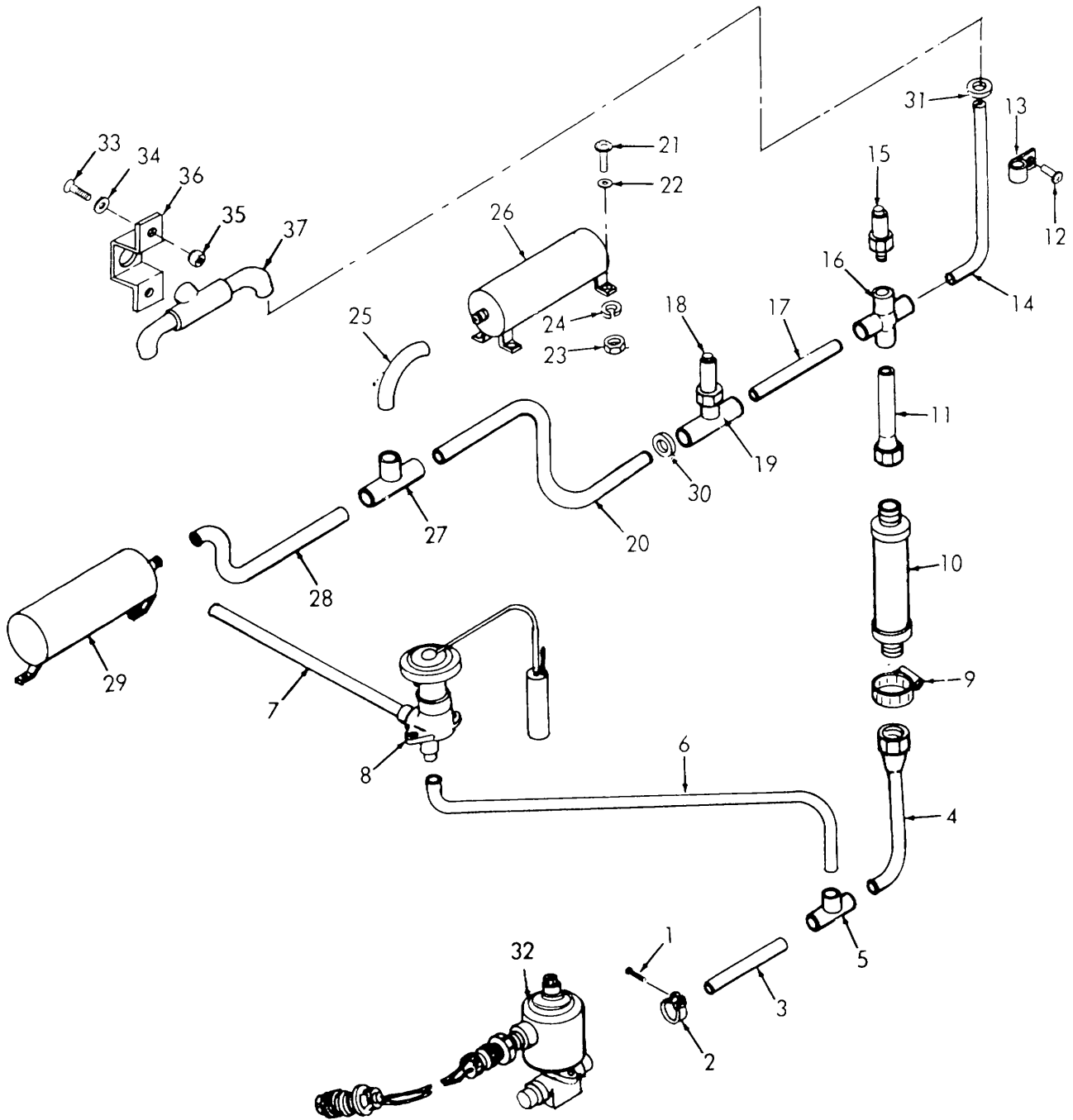
Figure 10. Junction Box Contractors and Terminal Boards



ME 4120-270 -35P/15

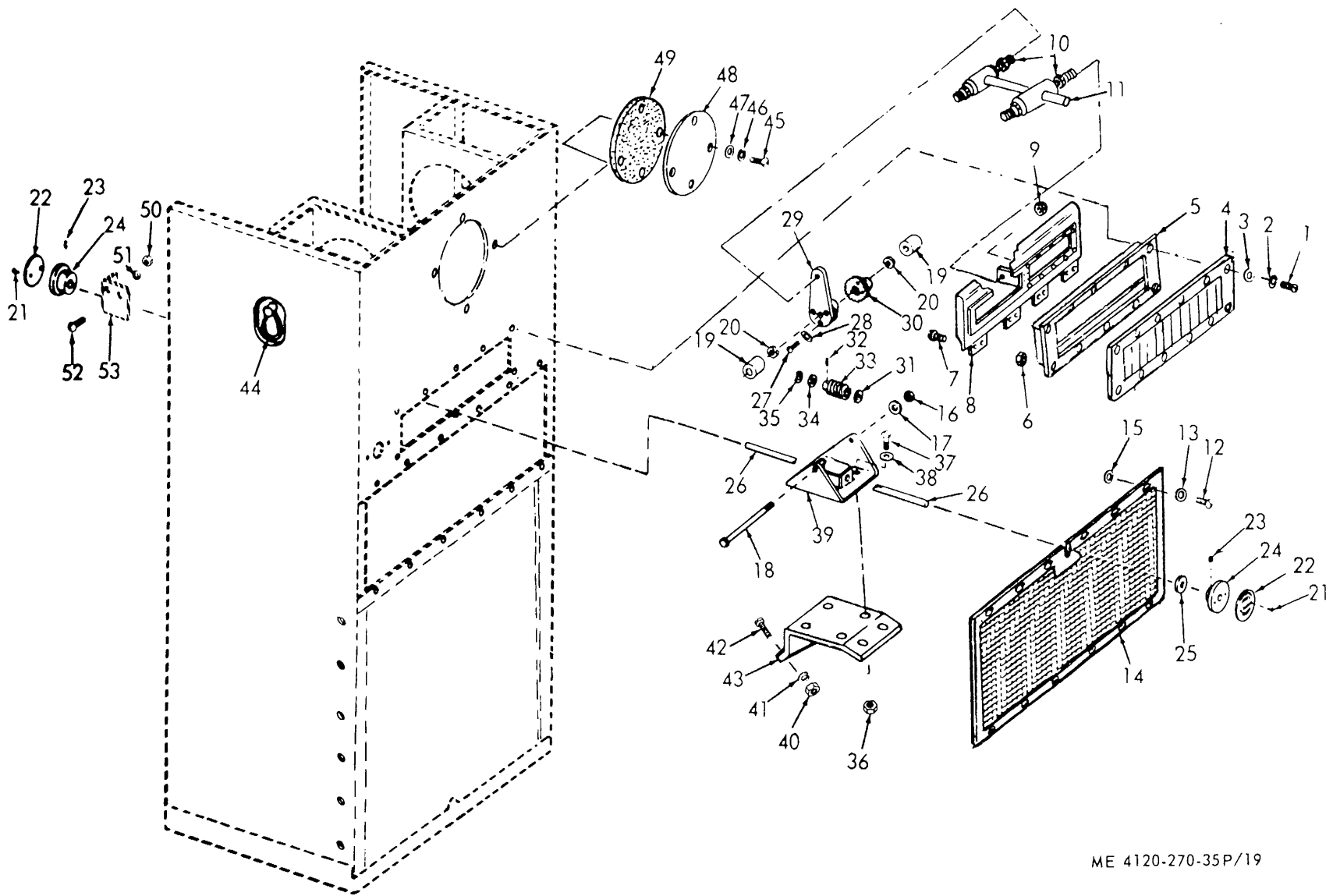
Figure 15. Compressor Terminal Box





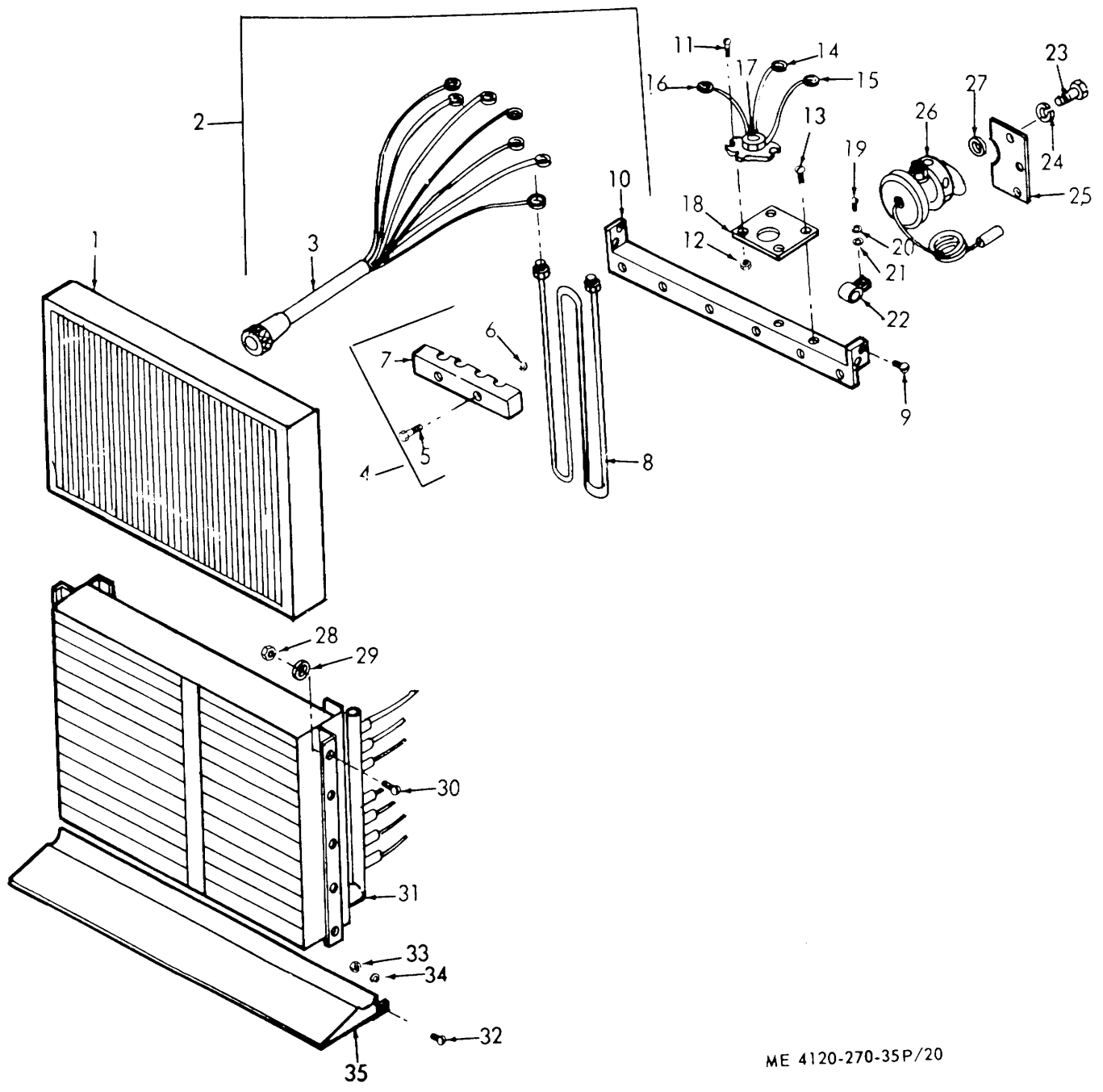
ME 4120-270-35P/17

Figure 17. Dehydrator, Tubing, Valves and Sight Glass



ME 4120-270-35P/19

Figure 19. Damper and Linkage



ME 4120-270-35P/20

Figure 20. Evaporator, Mist Eliminator and Heater

**Section V. INDEX-FEDERAL STOCK NUMBER AND REFERENCE NUMBER  
CROSS-REFERENCE TO FIGURE AND ITEM NUMBER**

<u>Stock Number</u>	<u>Figure No.</u>	<u>Item No.</u>	<u>Stock Number</u>	<u>Figure No.</u>	<u>Item No.</u>
4130-834-5382	5	9	5310-959-4679	6	2
4130-834-5384	5	8		7	4
4730-044-4668	2	5		7	10
4730-908-3194	15	12	5315-141-6355	1	13
5305-010-0742	9	12		1	16
5305-013-9708	5	7	5315-234-1856	15	27
5305-053-1114	3	31	5315-663-2329	19	32
5305-175-3230	7	1	5315-730-4572	5	15
	19	21	5320-956-7362	3	16
5305-639-8118	5	2	5325-282-2045	9	24
5305-724-6799	19	23	5325-641-1632	1	11
5305-889-3000	13	28		1	15
5305-928-9867	19	1		1	20
5305-958-5451	10	34	5340-598-1474	1	12
5305-959-5237	9	2		1	17
	9	18	5340-829-0061	9	25
5305-984-6191	13	9	5355-282-2045	1	19
	13	14	5920-280-3175	10	32
	17	33	5920-939-5442	10	33
5305-984-6193	3	7	6105-350-5021	5	10
	3	26	6105-350-5024	6	6

**Section V. INDEX-FEDERAL STOCK NUMBER AND REFERENCE NUMBER  
CROSS-REFERENCE TO FIGURE AND ITEM NUMBER**

<u>Reference No.</u>	<u>Mfg. Code</u>	<u>Figure No.</u>	<u>Item No.</u>	<u>Reference No.</u>	<u>Mfg. Code</u>	<u>Figure No.</u>	<u>Item No.</u>
AD42H	61957	8	12	04525-224-1	60532	4	6
	61957	9	15	04525-235-1	60532	6	4
AD43H	61957	1	34	04525-236-1	60532	6	5
A062H	61957	3	16	04525-3-1	60532	1	4
AK41H	61957	3	19	04525-4-1	60532	1	7
AK42H	61957	1	18	04525-493-1	60532	19	11
	61957	9	5	04525-5-1	60532	1	6
	61957	9	19	04525-579	60532	19	39
	61957	9	23	04525-750-1	60532	3	10
A31004	21585	3	6	04525-750-2	60532	3	9
A4525-229-2	60532	7	6	04525-794-1	60532	19	19
A4525-291-74	60532	10	43	04525-859-1	60532	1	10
A4525-319-1	60532	9	1	EC103-10-32	78643	19	10
	60532	9	1	FAN319	60532	5	9
A4525-371	60532	9	22	FAN320	60532	5	8
64525-793-1	60532	4	9	FNM1-6110	71400	10	32
BAL25	60532	15	29	F39155-5	15653	7	18
B4525-1-1	60532	1	3	G1152	79497	19	25
B4525-148	60532	1	33	KAW5	71400	10	33
B4525-196-2	60532	3	27	MS16535-298	96906	3	15
	60532	13	29	MS16633-1012	96906	10	9
B4525-196-4	60532	3	28	MS171499	96906	19	18
	60532	13	30		96906	19	32
B4525-215	60532	4	7	MS20066-146	96906	5	15
B4525-222-1	60532	4	2		96906	7	13
B4525-222-2	60532	4	3	MS210HS-08	96906	13	7
B4525-249-22	60532	13	26		96906	13	12
B4525-280	60532	15	14	MS21044N08	96906	3	8
B4525-374	60532	9	9		96906	17	35
B4525-376	60532	9	11	MS21044N3	96906	19	36
B4525-377	60532	9	10		96906	19	40
B4525-387-3	60532	9	3	MS21045-06	96906	13	27
B4525-387-4	60532	9	3	MS21045-08	96906	9	8
B4525-673-1	60532	5	1		96906	19	6
B4525-673-2	60532	5	1	MS21045-3	96906	10	1
B604-1008	60532	7	8		96906	13	1
CA2205-11	60532	3	33		96906	19	9
CMP91	60532	15	11		96906	19	50
COV312	60532	3	25	MS21318-14	06906	7	1
COV334	60532	19	5		96906	19	21
C13853-1420	78553	9	17	MS21322-36	96906	13	4
C4524-1255-17	60532	9	4	MS21322-44	96906	10	4
C4524-3450-3	60532	3	18	MS24621-11	96906	3	31
C4524-3450-4	60532	3	17	MS24665-155	96906	15	27
C4524-6065-1	60532	19	29	MS27183-10	96906	19	51
C4525-147-1	60532	1	30	MS27183-12	96906	6	3
C4525-147-2	60532	1	31		96906	7	5
C4525-2-1	60532	1	5		96906	7	11
C4525-201-1	60532	3	4		96906	19	31
C4525-202	60532	3	3		96906	19	34
C4525-206-1	60532	9	6	MS27183-6	96906	10	10
C4525-208-1	60532	8	13		96906	10	14
C4525-212-1	60532	19	22		96906	10	35
C4525-228-1	60532	19	24	MS27183-7	96906	1	2
C4525-241-22	60532	13	31		96906	13	8
C4525-281	60532	15	30		96906	13	13
C4525-355	60532	9	13		96906	17	34
C4525-492-1	60532	19	53		96906	19	3
C4525-510	60532	19	8		96906	19	15
C4525-644	60532	19	30		96906	19	46
C4525-761-3	60532	5	5	MS27183-8	96906	10	2
C4525-761-4	60532	5	6		96906	10	44
C6974-14-41	78553	9	25		96906	13	2
D4515-414	71400	10	37		96906	19	38
D4524-6036-1	60532	19	33	MS3100R18-1S	96906	13	11
D4524-6057-1	60532	19	26		96906	13	16
D4524-6339-1	60532	19	20	MS3100R32-17P	96906	13	10
	60532	19	35		96906	13	15
D4525-128-3	60532	19	48	MS3106R32-17S	96906	3	34
D4525-129-3	60532	19	49	MS35190-239	96906	10	34
D4525-142-1	60532	1	29	MS35191-275	96906	3	23
D4525-143-1	60532	1	27		96906	4	1
D4525-144-1	60532	1	28	MS35206-230	96906	13	28
D4525-145-1	60532	1	32	MS35206-243	96906	13	9
D4525-146-1	60532	1	24		96906	13	14
D4525-186-1	60532	7	12		96906	17	33
D4525-200-1	60532	3	5	MS35206-245	96906	3	7
D4525-216-1	60532	4	10		96906	3	26
D4525-217-1	60532	4	11	M535206-246	96906	1	1
D4525-218-1	60532	4	12		96906	19	7
D4525-223-1	60532	4	4		96906	19	12
D4525-224-1	60532	4	5		96906	19	45

**Section V. INDEX-FEDERAL STOCK NUMBER AND REFERENCE NUMBER  
CROSS-REFERENCE TO FIGURE AND ITEM NUMBER**

<b>Reference</b>	<b>Mfg.</b>	<b>Figure</b>	<b>Item</b>
<b><u>No.</u></b>	<b><u>Code</u></b>	<b><u>No.</u></b>	<b><u>No.</u></b>
MS35207-210	96906	19	1
MS35207-263	96906	10	45
	96906	15	10
MS35207-264	96906	10	3
	96906	13	3
MS35207-265	96906	3	24
	96906	4	8
	96906	9	20
	96906	19	37
	96906	19	52
MS35207-267	96906	19	42
MS35306-231	96906	9	7
MS35338-41	96906	10	12
	96906	10	13
MS35338-42	96906	19	47
MS3533e-43	96906	19	41
MS35339-27	96906	7	4
MS25339-43	96906	19	2
MS53340-43	96906	9	21
MS35340-45	96906	6	2
	96906	7	10
MS35790-9	96906	19	13
	96906	19	28
MS35822-1E	96906	3	14
MS35842-11	96906	15	12
MS51964-51	96906	19	23
MS90725-32	96906	7	3
MS90725-36	96906	7	9
MS90726-34	96906	6	1
PLT266	60532	7	2
PLU128	60532	2	5
R8175	86797	8	2
R4G	71286	1	12
	71286	1	17
SCR282	60532	9	18
SCR325	60532	5	7
	60532	7	7
SPG55	60532	15	28
XX78328-20	61864	3	13
06-10010	74193	10	15
12-11-203-12	94222	9	2
12-11-509-12	94222	3	1
12-11-613-12	94222	1	23
12-11014-12	94222	3	2
13211E4245	60532	17	36
13214E3741-4	60532	3	32
13214E4106	60532	19	4
13214E4155-183	60532	13	20
13214E4155-185	60532	13	18
13214E4155-186	60532	13	25
13214E4155-187	60532	13	19
13214E4155-188	60532	13	17
13214E4155-23	60532	13	23
13214E4155-24	60532	13	24
13214E4208	60532	3	30
13214E4208-1	60532	3	20
13214E4259	60532	19	14
13214E4509	60532	19	43
13216E4544	24274	20	1
13217E6813	60532	10	11
13217E6815	60532	10	5
13217E6815-1	60532	10	8
13217E6816	60532	10	7
13217E6817	60532	10	6
17-10015-14	94222	9	16
17-11-304-12	94222	1	9
244-16	71286	1	35
2819	71400	10	36
40S37-34	71286	3	12
4CS37-7	71286	1	11
	71286	1	15
	71286	1	20
4002N	71286	1	19
	71286	9	24
408	61864	3	29
4725-16	64731	5	10
4725-18	64731	5	10
7030-6	64731	6	6
7045-3	64731	6	6
9315P	64731	5	20
99785-2	76530	1	13
	76530	1	16

By Order of the Secretary of the Army:

Official:

KENNETH G. WICKHAM,  
*Major General, United States Army,  
The Adjutant General.*


W. C. WESTMORELAND,  
*General, United States Army,  
Chief of Staff.*

Distribution:

To be distributed in accordance with DA Form 12-25, Section III (qty rqr block no. 574) Organizational Maintenance requirements for Air Conditioners, 60,000 BTU.

\*U.S. GOVERNMENT PRINTING OFFICE: 1990-261-888/22678

RECOMMENDED CHANGES TO EQUIPMENT TECHNICAL PUBLICATIONS

 <p style="font-size: small; margin: 0;"><i>THEN...JOT DOWN THE DOPE ABOUT IT ON THIS FORM. CAREFULLY TEAR IT OUT, FOLD IT AND DROP IT IN THE MAIL.</i></p>		SOMETHING WRONG WITH PUBLICATION	
		FROM: (PRINT YOUR UNIT'S COMPLETE ADDRESS)	
		DATE SENT	
PUBLICATION NUMBER		PUBLICATION DATE	PUBLICATION TITLE
IN THIS SPACE, TELL WHAT IS WRONG AND WHAT SHOULD BE DONE ABOUT IT.			
BE EXACT PIN-POINT WHERE IT IS			
PAGE NO.	PARA-GRAPH	FIGURE NO.	TABLE NO.
PRINTED NAME, GRADE OR TITLE AND TELEPHONE NUMBER		SIGN HERE	



## The Metric System and Equivalents

### Linear Measure

1 centimeter = 10 millimeters = .39 inch  
 1 decimeter = 10 centimeters = 3.94 inches  
 1 meter = 10 decimeters = 39.37 inches  
 1 dekameter = 10 meters = 32.8 feet  
 1 hectometer = 10 dekameters = 328.08 feet  
 1 kilometer = 10 hectometers = 3,280.8 feet

### Weights

1 centigram = 10 milligrams = .15 grain  
 1 decigram = 10 centigrams = 1.54 grains  
 1 gram = 10 decigrams = .035 ounce  
 1 decagram = 10 grams = .35 ounce  
 1 hectogram = 10 decagrams = 3.52 ounces  
 1 kilogram = 10 hectograms = 2.2 pounds  
 1 quintal = 100 kilograms = 220.46 pounds  
 1 metric ton = 10 quintals = 1.1 short tons

### Liquid Measure

1 centiliter = 10 milliliters = .34 fl. ounce  
 1 deciliter = 10 centiliters = 3.38 fl. ounces  
 1 liter = 10 deciliters = 33.81 fl. ounces  
 1 dekaliter = 10 liters = 2.64 gallons  
 1 hectoliter = 10 dekaliters = 26.42 gallons  
 1 kiloliter = 10 hectoliters = 264.18 gallons

### Square Measure

1 sq. centimeter = 100 sq. millimeters = .155 sq. inch  
 1 sq. decimeter = 100 sq. centimeters = 15.5 sq. inches  
 1 sq. meter (centare) = 100 sq. decimeters = 10.76 sq. feet  
 1 sq. dekameter (are) = 100 sq. meters = 1,076.4 sq. feet  
 1 sq. hectometer (hectare) = 100 sq. dekameters = 2.47 acres  
 1 sq. kilometer = 100 sq. hectometers = .386 sq. mile

### Cubic Measure

1 cu. centimeter = 1000 cu. millimeters = .06 cu. inch  
 1 cu. decimeter = 1000 cu. centimeters = 61.02 cu. inches  
 1 cu. meter = 1000 cu. decimeters = 35.31 cu. feet

## Approximate Conversion Factors

<i>To change</i>	<i>To</i>	<i>Multiply by</i>	<i>To change</i>	<i>To</i>	<i>Multiply by</i>
inches	centimeters	2.540	ounce-inches	Newton-meters	.007062
feet	meters	.305	centimeters	inches	.394
yards	meters	.914	meters	feet	3.280
miles	kilometers	1.609	meters	yards	1.094
square inches	square centimeters	6.451	kilometers	miles	.621
square feet	square meters	.093	square centimeters	square inches	.155
square yards	square meters	.836	square meters	square feet	10.764
square miles	square kilometers	2.590	square meters	square yards	1.196
acres	square hectometers	.405	square kilometers	square miles	.386
cubic feet	cubic meters	.028	square hectometers	acres	2.471
cubic yards	cubic meters	.765	cubic meters	cubic feet	35.315
fluid ounces	milliliters	29.573	cubic meters	cubic yards	1.308
pints	liters	.473	milliliters	fluid ounces	.034
quarts	liters	.946	liters	pints	2.113
gallons	liters	3.785	liters	quarts	1.057
ounces	grams	28.349	liters	gallons	.264
pounds	kilograms	.454	grams	ounces	.035
short tons	metric tons	.907	kilograms	pounds	2.205
pound-feet	Newton-meters	1.356	metric tons	short tons	1.102
pound-inches	Newton-meters	.11296			

### Temperature (Exact)

°F	Fahrenheit temperature	5/9 (after subtracting 32)	Celsius temperature	°C
----	------------------------	----------------------------	---------------------	----

